



# Product Catalog



**Garden Equipment**



Prices effective  
**April 2024**  
Prices Include GST

## Table of Contents

<i>Brush Cutters .....</i>	<i>3</i>
<i>Brush Cutter Nylon, Bumper Heads and Blades...</i>	<i>8</i>
<i>Brush Cutter Harnesses and Motors .....</i>	<i>11</i>
<i>Hoses .....</i>	<i>13</i>
<i>Hose Fittings .....</i>	<i>16</i>
<i>Spray and Fog Nozzles.....</i>	<i>23</i>
<i>Hose Clamps .....</i>	<i>24</i>
<i>Pumps.....</i>	<i>29</i>
<i>Chainsaws .....</i>	<i>32</i>
<i>Safety Gear .....</i>	<i>36</i>
<i>Shredder Chippers .....</i>	<i>46</i>
<i>Engines .....</i>	<i>48</i>
<i>Augers .....</i>	<i>50</i>
<i>Sprayers .....</i>	<i>55</i>
<i>Hedge Trimmers .....</i>	<i>56</i>
<i>Tillers .....</i>	<i>58</i>
<i>Repair Kits / Tools .....</i>	<i>59</i>



**Multitool -  
Motor Unit - 51.7cc**

Model: KM0408539B  
 Engine: KM1E44F-2 SEMI  
 Displacement: 51.7cc  
 Power: 1.4kW, 2HP  
 Shaft Diameter: 26mm  
 Weight NW: 6.1kg  
 Included:  
 No attachments included

**\$209.00**



**Multitool - Brush Cutter  
Pack Backpack - 51.7cc**

Model: KM0408526  
 Engine: KM1E44F-2 SEMI  
 Displacement: 51.7cc  
 Power: 1.4kW, 2HP  
 Shaft Diameter: 26mm  
 Weight NW: 14.2kg  
 Included: Attachments  
 - Weed Eater Bumper Head  
 - Brush Cutter 3 tooth metal blade

**\$310.00**



**Multitool - Brush  
Cutter Pack - 51.7cc**

Model: KM0408537SF  
 Engine: KM1E44F-2 SEMI  
 Displacement: 51.7cc  
 Power: 1.4kW, 2HP  
 Shaft Diameter: 26mm  
 Weight NW: 7.85kg  
 Included: Attachments  
 - Weed Eater Bumper Head  
 - Brush Cutter 3 tooth metal blade

**\$239.00**



**Multitool - 4 Pack  
Backpack - 51.7cc**

Model: KM0408529  
 Engine: KM1E44F-2 SEMI  
 Displacement: 51.7cc  
 Power: 1.4kW, 2HP  
 Shaft Diameter: 26mm  
 Weight NW: 18.6kg  
 Included: Attachments  
 - 10" Chainsaw , - Hedge Trimmer  
 - Weed Eater Bumper Head  
 - Brush Cutter 3 tooth metal blade

**\$439.00**



**Multitool -  
4 Pack - 51.7cc**

Model: KM0408539  
 Engine: KM1E44F-2 SEMI  
 Displacement: 51.7cc  
 Power: 1.4kW, 2HP  
 Shaft Diameter: 26mm  
 Weight NW: 14.7kg  
 Included: Attachments  
 - 10" Chainsaw  
 - Hedge Trimmer  
 - Weed Eater Bumper Head  
 - Brush Cutter 3 tooth metal blade

**\$389.00**



**Multitool - 4 Pack - 4  
Stroke - 33.5cc**

Model: KM0408539F  
 Engine: KM139F-2  
 Displacement: 33.5cc  
 Power: 0.8kW, 1.2HP  
 Shaft Diameter: 28mm  
 Weight NW: 15kg  
 Included: Attachments  
 - 10" Chainsaw , - Hedge Trimmer  
 - Weed Eater Bumper Head  
 - Brush Cutter 3 tooth metal blade

**\$495.00**



**Multitool - Motor Unit  
Backpack - 51.7cc**

Model: KM0408526B  
 Engine: KM1E44F-2 SEMI  
 Displacement: 51.7cc  
 Power: 1.4kW, 2HP  
 Shaft Diameter: 26mm  
 Weight NW: 10.1kg  
 Included:  
 No attachments included

**\$259.00**



**Multitool - Brush Cut-  
ter Pack - Light - 25.4cc**

Model: KM0408250EF  
 Engine: KM1E34F  
 Displacement: 25.4cc  
 Power: 0.75kW, 1.1HP  
 Shaft Diameter: 26mm  
 Weight NW: 6.5kg  
 Included: Attachments  
 - Weed Eater Bumper Head  
 - Brush Cutter 3 tooth metal blade

**\$239.00**



## Multitool - 4 Pack - Light - 25.4cc

Model: KM0408255  
 Engine: KM1E34F  
 Displacement: 25.4cc  
 Power: 0.75kW, 1.1HP  
 Shaft Diameter: 26mm  
 Weight NW: 6.5kg  
 Included: Attachments  
 - 10" Chainsaw  
 - Hedge Trimmer  
 - Weed Eater Bumper head  
 - Brush Cutter 3 tooth metal

**\$359.00**



## Multitool - Chainsaw - 12"

Model: KM0408MF005A  
 Adjustable Angled Head  
 Length: 100cm  
 Weight NW: 2.1kg

**\$139.00**



## Multitool - Extension Pole - 50cm

Model: KM0408MF007A  
 Length: 50cm  
 Weight NW: 0.6kg

**\$32.95**



## Multitool - Chainsaw , Rotatable - 10"

Model: KM0408MF05G  
 Length: 100cm  
 Cutting Angle: 90°  
 Oil Pump: Automatic  
 Bar: 10" KNK  
 Chain: 1/4" x 0.050" (58 links)  
 Shaft Diameter: 26mm  
 Attachment connection: 5.5mm,  
 Square Shaft  
 Weight NW: 2.2kg

**\$249.00**



## Multitool - Extension Pole - 100cm

Model: KM0408MF007  
 Length: 100cm  
 Weight NW: 1kg

**\$39.95**



## Multitool - Reciprocal Saw - 180mm (7")

Model: KM0408MF32  
 Length: 100cm  
 Blade: 180mm (7")  
 Shaft Diameter: 26mm  
 Attachment connection: 5.5mm,  
 Square Shaft 8mm  
 Weight NW: 1.6kg

**\$169.00**



## Multitool - Chainsaw - 12"

Model: KM0408MF005  
 Length: 100cm  
 Pitch: 3/8"  
 Gauge: 0.050"  
 Weight NW: 1.65kg

**\$89.95**



## Multitool - Hedge Trimmer - 30cm

Model: KM0408MF04S  
 Pole / Blade Length: 30cm / 42cm  
 Weight NW: 2.5kg

**\$104.95**



**Multitool - Hedge Trimmer - 75cm**

Model: KM0408MF04  
Pole / Blade Length: 75cm / 42cm  
Weight NW: 2.30kg

**\$119.00**



**Multitool - Water Pump**

Model: KM0408MF012  
Weight NW: 1.5kg  
Included: Fitting

**\$79.95**



**Multitool - Hedge Trimmer - 75cm**

Model: KM0408MF04A  
Pole / Blade Length: 75cm / 42cm  
Weight NW: 2.5kg  
No Set Adjustment

**\$189.00**



**Multitool - Blower**

Model: KM0408MF33  
Fan: 3-stage axial  
Wind Speed: 225Km/h  
Air Volume: 475 CFM  
Shaft Diameter: 26mm  
Weight NW: 2.5kg

**\$119.00**



**Multitool - Brush Cutter**

Model: KM0408MF006  
Weight NW: 1.75kg  
Included: Attachments  
- Weed Eater Bumper Head  
- Brush Cutter 3 tooth metal blade

**\$65.95**



**Multitool - Planter**

Model: M0408MF19  
Hole Depth: 120mm  
Hole Diameter: 75mm

**\$69.00**



**Multitool - Lawn Edger**

Model: KM0408MF010  
Blade: Metal  
Weight NW: 1.75kg

**\$95.00**



**Multitool - Olive Shaker**

Model: KM0408MF13  
Pole Length: 70cm  
Shaft Diameter: 26mm  
Attachment connection: 5.5mm, Square Shaft  
Weight NW: 2.5kg

**\$285.00**



## Multitool - Storage Bag - 1140mm

Model: KM0408BG02  
Length: 1140mm  
Weight NW: 1.4kg

**\$59.95**



## Adaptor for Stihl Multi-System

Model: KM0408MF07C

Allows you to connect KNK Multi-tool attachments to your Stihl Multitool Engine Unit

**\$38.95**



## Multitool - Hoover Mower

Model: KM0408MF009  
Blade: Metal  
Weight NW: 2.3kg

**\$119.95**



## Multitool - Concrete Vibrator

Model: KM0408MF27  
Length: 100cm  
Shaft Diameter: 26mm  
Attachment connection: 8mm, Square Shaft  
Vibrator Diameter: 45mm  
Vibration Frequency: 9000vpm  
Rotary speed : 6500rpm  
Weight NW: 4.5kg

**\$199.00**



## Multitool - Sweeper - 580mm

Model: KM0408MF16  
Width: 580mm  
Diameter: 220mm  
Gear Ratio: 46:1  
Weight NW: 4.4kg

**\$175.00**



## Brush Cutter - Professional - 51.7cc

Model: KM0408520  
Engine: KM1E44F-2 PRO  
Displacement: 51.7cc  
Power: 1.4kW, 2HP  
Shaft Diameter: 28mm  
Weight NW: 10kg  
Included: Attachments  
- Weed Eater Bumper head  
- Brush Cutter 3 tooth metal blade

**\$345.00**



## Multitool - Tiller

Model: KM0408MF008  
Weight NW: 4.65kg

**205.00**



## Brush Cutter - Semi-Professional - 51.7cc

Model: KM0408537  
Engine: KM1E44F-2 SEMI  
Displacement: 51.7cc  
Power: 1.4kW, 2HP  
Shaft Diameter: 26mm  
Weight NW: 9.5kg  
Included: Attachments  
- Weed Eater Bumper head  
- Brush Cutter 3 tooth metal blade

**\$239.00**



**Brush Cutter - 4 Stroke - 33.5cc**

Model: KM0408312  
Engine: KM139F-2  
Displacement: 33.5cc  
Power: 0.8kW, 1.2HP  
Shaft Diameter: 28mm  
Weight NW: 10kg  
Included: Attachments  
- Weed Eater Bumper head  
- Brush Cutter 3 tooth metal blade

**\$329.00**



**Pole Pruner Saw - 4.2m**

Model: KM0408246  
Engine: KM1E 40F-5  
Displacement: 42.7cc  
Power: 1.25kW, 1.8HP  
Length: 2.5-4.2m  
Weight NW: 9.75kg

**\$629.00**



**Brush Cutter on Wheels**

Model: KM0408438D  
Engine: KM1E40F-5  
Displacement: 42.7cc  
Power: 1.25kW, 1.7HP  
Shaft Diameter: 26mm  
Wheel Size: 203mm (8")  
Starting: Pull  
Ignition System: Electronic (CDI)  
Clutch: Centrifugal  
Fuel Mixture: 1:25  
Harness: Full  
Weight NW: 15kg

**\$349.00**



**Pole Pruner - Hedge Trimmer Attachment - 42cm**

Model: KM0408MF04B  
Blade Length: 42cm  
Weight NW: 2.70kg

**\$129.00**



**Brush Cutter on Wheels - 173cc**

Model: KM0412107  
Engine: KM164FV  
Displacement: 173cc  
Power: 4.1kW, 6.5HP  
Wheel Size: 355.6mm (14")  
Starting: Pull  
Ignition System: Electronic (CDI)  
Cutting Width: 56cm (22")  
Cutting Height: 3.8-7.6cm (1.5"-3")  
Trimmer Line Size: Max Nylon Size  
Weight NW: 31kg

**\$739.00**



### Nylon Trimmer Line - 2.7mm - 80m

Model: KM04088027  
Material: Nylon  
Shape: Round  
Diameter: 2.7mm  
Length: 80m

\$25.95



### Trimmer Line Head - Self Winding - Small Type

Model: KM0409007S  
Thread: Reverse (10mm)

\$29.95



### Nylon Trimmer Line - 2.6mm - 80m

Model: KM04082680  
Material: Nylon  
Shape: Square  
Size: 2.6mm  
Length: 80m

\$23.95



### Trimmer Line Head - Heavy Duty - Self Winding

Model: KM0409026  
Thread: Reverse (10mm)  
Diameter: 130mm

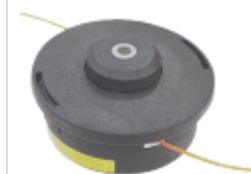
\$33.95



### Nylon Trimmer Line - 3.0mm - 80m

Model: KM04083080  
Material: Nylon  
Shape: Square  
Size: 3.0mm  
Length: 80m

25.95



### Trimmer Line Head - Heavy Duty

Model: KM0409004  
Type: Twin Feed

\$24.95



### Nylon Trimmer Line - 2.65mm - 80m

Model: KMTL265W80-RL  
Material: Nylon  
Shape: Square / Twisted  
Diameter: 2.65mm  
Length: 80m

\$23.95



### Trimmer Line Head - With Blades

Model: KM0409059

\$19.95





**Trimmer Line Head - Large Bumper**

Model: 64-32B  
Thread: Reverse (10mm)  
Diameter: 101mm

\$24.95



**Blade - Protective Ring - 3 Tooth 10"**

Model: KM0409141

\$24.95



**Wire Brush Cleaner - 6.5"**

Model: KM0409014M(64-14M)  
Size: 170mm (6.5")  
Mounting Hole Diameter: 25.4mm

\$21.95



**Anti-Tangle Blade**

Model: KM0409015

\$7.95



**Wire Brush Cleaner - 8"**

Model: 60-14MC  
Size: 200mm (8")  
Mounting Hole Diameter: 25.4mm

\$24.95



**Trimmer Line Head - 4 Line**

Model: KM0409133

\$17.95



**Nylon Brush Cleaner**

Model: KM0409014

\$29.95



**Trimmer Line Head - 4 Line**

Model: KM0409101

\$24.95



### Blade - Steel 65Mn - 2 Tooth

Model: KMD02304  
Material: Steel 65Mn  
Diameter: 300mm  
Thickness: 4.0mm  
No. Of Teeth: 2  
Hole Diameter: 25.4mm (1")

**\$14.95**



### Blade - Steel 65Mn - 40 Tooth

Model: KMD40252  
Material: Steel 65Mn  
Diameter: 255mm  
Thickness: 2.4mm  
No. of Teeth: 40

**\$15.95**



### Blade - Steel 65Mn - 3 Tooth

Model: KMD03262  
Material: Steel 65Mn  
Diameter: 255mm  
Thickness: 2.4mm  
No. Of Teeth: 3

**\$14.95**



### Blade - Steel 65Mn - 80 Tooth

Model: KMD80252  
Material: Steel 65Mn  
Diameter: 255mm  
Thickness: 2.4mm  
No. Of Teeth: 80

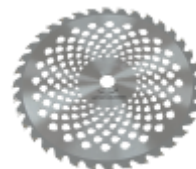
**\$12.50**



### Blade - Steel 65Mn - 8 Tooth

Model: KMD08263  
Material: Steel 65Mn  
Diameter: 250mm  
Thickness: 3mm  
No. Of Teeth: 8  
Hole Diameter: 25.4mm (1")

**\$14.95**



### Blade - Tungsten Carbide - 40 Tooth

Model: KMDT40251A  
Material: Tungsten Carbide  
Diameter: 255mm  
Thickness: 1.3mm  
No. Of Teeth: 40  
Colour: Silver

**\$19.95**



### Blade - Steel 65Mn - 8 Tooth

Model: KMD08263A  
Material: Steel 65Mn  
Diameter: 250mm  
Thickness: 3mm  
No. Of Teeth: 8  
Hole Diameter: 20mm

**\$14.95**



### Blade - Tungsten Carbide - 40 Tooth

Model: KMDT40251EA  
Material: Tungsten Carbide  
Diameter: 255mm  
Thickness: 1.3mm  
No. Of Teeth: 40  
Colour: Red

**\$19.95**



**Blade - Tungsten Carbide - 36 Tooth**

Model: KMDT36251C  
Material: Tungsten Carbide  
Diameter: 255mm  
Thickness: 1.3mm  
No. Of Teeth: 36  
Function: Mulching Blade  
Colour: Red

\$24.95



**Harness - Standard**

Model: KM260-CE-1  
Type: Standard Harness

\$12.95



**Blade - Tungsten Carbide - 40 Tooth**

Model: KMDT40253B  
Material: Tungsten Carbide  
Diameter: 255mm  
Thickness: 1.3mm  
No. Of Teeth: 40  
Colour: Silver

\$19.95



**Harness - Premium**

Model: KM305F  
Type: Premium Harness

\$24.95



**Blade - Tungsten Carbide - 40 Tooth**

Model: KMDT40252B  
Material: Tungsten Carbide  
Diameter: 255mm  
Thickness: 1.8mm  
No. Of Teeth: 40  
Colour: Silver

\$24.95



**Harness - Professional**

Model: KM882  
Type: Professional

\$39.95



**Blade - Tungsten Carbide - 24 Tooth**

Model: KMDT24255  
Material: Tungsten Carbide  
Diameter: 255mm  
Thickness: 1.3mm  
No. Of Teeth: 24

\$18.50



## Engine - 2 Stroke - 25.4cc

Model: KM1E34F  
Engine: KM1E34F  
Displacement: 25.4cc  
Bore and Stroke: 39 x 28mm  
Power: 0.75kW, 1.1HP  
Start: Pull  
Fuel Type: Petrol, 25:1  
Fuel Consumption: <740g/kWh  
Fuel Tank: 0.75L  
Packing Size: 270 x 240 x  
295mm  
Weight NW: 2.7kg

**\$115.00**



## Engine - 4 Stroke - 33.5cc

Model: KM139F-2  
Engine: KM139F-2  
Displacement: 33.5cc  
Bore and Stroke: 39 x 28mm  
Power 0.8kW, 1.2HP  
Start: Pull  
Fuel Type: Petrol  
Fuel Consumption: <480g/Kwh  
Fuel Tank: 0.76L  
Packing Size: 28.3 x 25 x 31cm  
Weight NW: 3.8kg

**\$195.00**



## Engine - 2 Stroke- 51.7cc Semi

Model: KM1E44F-2 SEMI  
Engine: KM1E44F-2 SEMI  
Displacement: 51.7cc  
Bore and Stroke: 44 x 34mm  
Power 1.4kW, 2.0HP  
Start: Pull  
Fuel Type: 2 Stroke, 1:25  
Fuel Consumption: <610g/kWh  
Fuel Tank: 1.1L  
Packing Size: 30.5 x 25 x 29cm  
Weight NW: 4kg

**\$139.00**



## Engine - 2 Stroke- 51.7cc Pro

Model: KM1E44F-2 PRO  
Engine: KM1E44F-2 PRO  
Displacement: 51.7cc  
Bore and Stroke: 44 x 34mm  
Power 1.4kW, 2.0HP  
Start: Pull  
Fuel Type: 2 Stroke, 1:25  
Fuel Consumption: <610g/Kwh  
Fuel Tank: 1.1L  
Packing Size: 30.5 x 25 x 29cm  
Weight NW: 4.2Kgs

**\$149.00**



**Flat Hose - PVC - 4Bar,  
25mm (1")**

Model: 84-03-1K4  
Length: Per Meter  
Diameter: 25mm (1")  
Pressure: 4bar, 400kPa, 58psi  
Colour: Blue  
Roll Price: 100m

**\$1.95**  
**\$175.50 Roll**

Note: All sales are to be in 10m increments



**Flat Hose - PVC - 4Bar,  
100mm (4")**

Model: 84-03-4K4  
Length: Per Meter  
Diameter: 100mm (4")  
Pressure: 4bar, 400kPa, 58psi  
Colour: Blue  
Roll Price: 100m

**\$5.80**  
**\$522.00 Roll**

Note: All sales are to be in 10m increments



**Flat Hose - PVC - 4Bar,  
38mm (1.5")**

Model: 84-03-1.5K4  
Length: Per Meter  
Diameter: 38mm (1.5")  
Pressure: 4bar, 400kPa, 58psi  
Colour: Blue  
Roll Price: 100m

**\$2.20**  
**\$198.00 Roll**

Note: All sales are to be in 10m increments



**Flat Hose - PVC - 6Bar,  
25mm (1")**

Model: 84-03-1K6  
Length: Per Meter  
Diameter: 25mm (1")  
Pressure: 6bar, 600kPa, 87psi  
Colour: Blue  
Roll Price: 100m

**\$2.15**  
**\$193.50 Roll**

Note: All sales are to be in 10m increments



**Flat Hose - PVC - 4Bar,  
50mm (2")**

Model: 84-03-2K4  
Length: Per Meter  
Diameter: 50mm (2")  
Pressure: 4bar, 400kPa, 58psi  
Colour: Blue  
Roll Price: 100m

**\$2.30**  
**\$207.00 Roll**

Note: All sales are to be in 10m increments



**Flat Hose - PVC - 6Bar,  
38mm (1.5")**

Model: 84-03-1.5K6  
Length: Per Meter  
Diameter: 38mm (1.5")  
Pressure: 6bar, 600kPa, 87psi  
Colour: Blue  
Roll Price: 100m

**\$2.55**  
**\$229.50 Roll**

Note: All sales are to be in 10m increments



**Flat Hose - PVC - 4Bar,  
75mm (3")**

Model: 84-03-3K4  
Length: Per Meter  
Diameter: 75mm (3")  
Pressure: 4bar, 400kPa, 58psi  
Colour: Blue  
Roll Price: 100m

**\$4.20**  
**\$378.00 Roll**

Note: All sales are to be in 10m increments



**Flat Hose - PVC - 6Bar,  
50mm (2")**

Model: 84-03-2K6  
Length: Per Meter  
Diameter: 50mm (2")  
Pressure: 6bar, 600kPa, 87psi  
Colour: Blue  
Roll Price: 100m

**\$2.75**  
**\$247.50 Roll**

Note: All sales are to be in 10m increments



### Flat Hose - PVC - 6Bar, 75mm (3")

Model: 84-03-3K6  
 Length: Per Meter  
 Diameter: 76mm (3")  
 Pressure: 6bar, 600kPa, 87psi  
 Colour: Blue  
 Roll Price: 100m

Note: All sales are to be in 5m increments

**\$4.75**  
**\$445.50 Roll**



### Flat Hose Kit - G Type, 20m, 50mm (2")

Model: KM0404FH5020  
 Length: 20m with Fittings  
 Diameter: 50mm (2")  
 Pressure: 8bar, 800kPa, 116psi  
 Material: PVC Cotton Yarn  
 Inlet / Outlet: G Type Coupler

**\$59.95**



### Flat Hose - PVC - 6Bar, 100mm (4")

Model: 84-03-4K6  
 Length: Per Meter  
 Diameter: 100mm (4")  
 Pressure: 6bar, 600kPa, 87psi  
 Colour: Blue  
 Roll Price: 50m

Note: All sales are to be in 5m increments

**\$6.75**  
**\$303.70 Roll**



### Flat Hose Kit - G Type, 20m, 75mm (3")

Model: KM0404FH8020  
 Length: 20m with Fittings  
 Diameter: 75mm (3")  
 Pressure: 8bar, 800kPa, 116psi  
 Material: PVC Cotton Yarn  
 Inlet / Outlet: G Type Coupler

**\$89.95**



### Flat Hose Kit - G Type, 20m, 25mm (1")

Model: KM0404FH2520  
 Length: 20m with Fittings  
 Diameter: 25mm (1")  
 Pressure: 8bar, 800kPa, 116psi  
 Material: PVC Cotton Yarn  
 Inlet / Outlet: G Type Coupler

**\$52.95**



### Flat Hose Kit - G Type, 20m, 100mm (4")

Model: 8406K007  
 Length: 20m with Fittings  
 Diameter: 100mm (4")  
 Pressure: 8bar, 800kPa, 116psi  
 Material: PVC Cotton Yarn  
 Inlet / Outlet: G Type Coupler

**\$145.00**



### Flat Hose Kit - G Type, 20m, 38mm (1.5")

Model: KM0404FH3820  
 Length: 20m with Fittings  
 Diameter: 38mm (1.5")  
 Pressure: 8bar, 800kPa, 116psi  
 Material: PVC Cotton Yarn  
 Inlet / Outlet: G Type Coupler

**\$54.95**



### Fire Hose - Reel & Gun - 30M - 25mm (1")

Model: KM02277  
 Hose Size: Outlet hose Length 30m, Inlet hose Length 1m  
 Pressure: 14 bar  
 Gun diameter: 1"  
 Valve diameter: 1"  
 Flow Rate: 100L per minute  
 Reel: 555mmx570mmx220mm  
 Weight NW: 26kg  
 Heavy duty mounting arm

**\$565.00**





**Fire Hose - Reel & Gun  
- 30M - 25mm (1")**

Model: KM02279  
Hose Size: Outlet hose Length 30m,  
Inlet hose Length 1m  
Pressure: 14 bar  
Gun diameter: 1"  
Valve diameter: 1"  
Flow Rate: 100L per minute  
Reel: 555mmx570mmx220mm  
Weight NW: 23kg

**\$449.00**



**Spiral PVC, Steel Wire  
Reinforced Hose -  
50mm (2")**

Model: KM0404SW20100  
Length: Per Meter  
Diameter: 50mm (2")  
Colour: Clear  
Roll Price: 40m

**\$14.50  
\$490.00 Roll**

Note: All sales are to be in 5m increments



**Spiral PVC, Steel Wire  
Reinforced Hose -  
25mm (1")**

Model: KM0404SW10100  
Length: Per Meter  
Diameter: 25mm (1")  
Colour: Clear  
Roll Price: 50m

**\$5.00  
\$210.00 Roll**

Note: All sales are to be in 5m increments



**Spiral PVC, Steel Wire  
Reinforced Hose -  
75mm (3")**

Model: KM0404SW30100  
Length: Per Meter  
Diameter: 75mm (3")  
Colour: Clear  
Roll Price: 20m

**\$18.20  
\$305.00 Roll**

Note: All sales are to be in 5m increments



**Spiral PVC, Steel Wire  
Reinforced Hose -  
32mm (1.25")**

Model: 84-01-1.25/50  
Length: Per Meter  
Diameter: 32mm (1.25")  
Colour: Clear  
Roll Price: 50m

**\$6.50  
\$265.50 Roll**

Note: All sales are to be in 5m increments

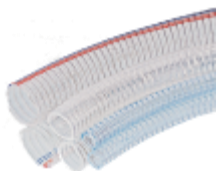


**Spiral PVC, Steel Wire  
Reinforced Hose -  
100mm (4")**

Model: KM0404SW40100  
Length: Per Meter  
Diameter: 100mm (4")  
Colour: Clear  
Roll Price: 20m

**\$29.00  
\$540.00 Roll**

Note: All sales are to be in 5m increments



**Spiral PVC, Steel Wire  
Reinforced Hose -  
38mm (1.5")**

Model: KM0404SW15100  
Length: Per Meter  
Diameter: 38mm (1.5")  
Colour: Clear  
Roll Price: 50m

**\$7.95  
\$327.50 Roll**

Note: All sales are to be in 5m increments



**Spiral PVC Reinforced  
Suction Hose - 25mm  
(1")**

Model: 8402002 X 10  
Length: 10m Roll  
Diameter: 25mm (1")  
Inner Diameter: 25.4mm  
Outer Diameter: 31.4mm  
Thickness 3mm  
Working Pressure: 7 (Burst 21) Bar  
Colour: Green

**\$45.00  
Per Roll**



## Spiral PVC Reinforced Suction Hose - 38mm

Model: 84-02-1.25 X 10  
 Length: 10m Roll  
 Diameter: 32mm (1.25")  
 Inner Diameter: 31mm  
 Outer Diameter: 37mm  
 Thickness 3mm  
 Working Pressure: 7 (Burst 21) Bar

**\$55.00**  
Per Roll



## Spiral PVC Reinforced Suction Hose - 100mm (4")

Model: 8402013 X 10  
 Length: 10m Roll  
 Diameter: 100mm (4")  
 Inner Diameter: 101mm  
 Outer Diameter: 111mm  
 Thickness 5mm  
 Working Pressure: 4 (Burst 12) Bar

**\$240.00**  
Per Roll



## Spiral PVC Reinforced Suction Hose - 38mm (1.5")

Model: 8402005 X 10  
 Length: 10m Roll  
 Diameter: 38mm (1.5")  
 Inner Diameter: 38mm  
 Outer Diameter: 46mm  
 Thickness 4mm  
 Working Pressure: 7 (Burst 21) Bar

**\$65.00**  
Per Roll



## Quick Coupler - G Type To Hose - 25mm (1")

Model: 75-14-1  
 Type: G Type to Hose  
 Diameter: 25mm (1")  
 Price is per single piece

**\$14.95**



## Spiral PVC Reinforced Suction Hose - 50mm (2")

Model: 8402007 X 10  
 Length: 10m Roll  
 Diameter: 50mm (2")  
 Inner Diameter: 51mm  
 Outer Diameter: 60mm  
 Thickness 4.5mm  
 Working Pressure: 6 (Burst 18) Bar

**\$110.00**  
Per Roll



## Quick Coupler - G Type To Hose - 38mm (1.5")

Model: 7514021  
 Type: G Type to Hose  
 Diameter: 38mm (1.5")  
 Price is per single piece

**\$15.95**



## Spiral PVC Reinforced Suction Hose - 75mm (3")

Model: 84-02-3 X 10  
 Length: 10m Roll  
 Diameter: 75mm (3")  
 Inner Diameter: 75mm  
 Outer Diameter: 85mm  
 Thickness 5mm  
 Working Pressure: 5 (Burst 15) Bar

**\$160.00**  
Per Roll



## Quick Coupler - G Type To Hose - 50mm (2")

Model: 7514031  
 Type: G Type to Hose  
 Diameter: 50mm (2")  
 Price is per single piece

**\$17.95**





**Quick Coupler - G Type  
To Hose - 75mm (3")**

Model: 75-14-3  
Type: G Type to Hose  
Diameter: 75mm (3")  
Price is per single piece

**\$20.95**



**Quick Coupler - G Type  
To Female - 50mm (2")**

Model: 75-13-2  
Type: G Type to Female (Pump  
End)  
Diameter: 50mm (2")  
Price is per single piece

**\$18.95**



**Quick Coupler - G Type  
To Hose - 100mm (4")**

Model: 75-14-4  
Type: G Type to Hose  
Diameter: 100mm (4")  
Price is per single piece

**\$37.95**



**Quick Coupler - G Type  
To Male - 50mm (2")**

Model: 751203  
Type: G Type to Male (Pump End)  
Diameter: 50mm (2")  
Price is per single piece

**\$18.95**



**Quick Coupler - G Type  
To Female - 25mm (1")**

Model: 75-13-1  
Type: G Type to Female (Pump  
End)  
Diameter: 25mm (1")  
Price is per single piece

**\$15.95**



**Quick Coupler - G Type  
To Male - 100mm (4")**

Model: 751206  
Type: G Type to Male (Pump End)  
Diameter: 100mm (4")  
Price is per single piece

**\$31.95**



**Quick Coupler - G Type  
To Female - 38mm (1.5")**

Model: 751302  
Type: G Type to Female (Pump  
End)  
Diameter: 38mm (1.5")  
Price is per single piece

**\$16.95**



**Quick Coupler - G Type  
To Female - 75mm (3")**

Model: 75-13-3  
Type: G Type to Female (Pump  
End)  
Diameter: 75mm (3")  
Price is per single piece

**\$19.95**



## Quick Coupler - G Type To Female - 100mm (4")

Model: 751306  
Type: G Type to Female (Pump End)  
Diameter: 100mm (4")  
Price is per single piece

**\$32.95**



## Quick Coupler - R Type Male to Hose 75mm

Model: 750808  
Type: R Type to Male  
Diameter: 75mm (3")

**\$21.00**



## Quick Coupler - R Type Male to Hose 25mm (1")

Model: 75-08AL-1  
Type: R Type to Male  
Diameter: 25mm (1")

**\$7.95**



## Quick Coupler - R Type Male to Hose 100mm (4")

Model: 75-08AL-4  
Type: R Type to Male  
Diameter: 100mm (4")

**\$30.00**



## Quick Coupler - R Type Male to Hose 38mm (1.5")

Model: 75-08AL-1.5  
Type: R Type to Male  
Diameter: 38mm (1.5")

**\$8.95**



## Quick Coupler - R Type Male To Male 25mm (1")

Model: 75-09AL-1  
Type: R Type to Male  
Diameter: 25mm (1")

**\$8.95**



## Quick Coupler - R Type Male to Hose 50mm (2")

Model: 750806  
Type: R Type to Male  
Diameter: 50mm (2")

**\$13.50**



## Quick Coupler - R Type Male To Male 38mm

Model: 75-09AL-1.5  
Type: R Type to Male  
Diameter: 38mm (1.5")

**\$9.95**



**Quick Coupler - R Type  
Male To Male 50mm**

Model: 75-09AL-2  
Type: R Type to Male  
Diameter: 50mm (2")

**\$13.95**



**Quick Coupler - R Type  
Male To Female -**

Model: 750403  
Type: R Type to Female  
Diameter: 25mm (1")

**\$8.95**



**Quick Coupler - R Type  
Male To Male 75mm  
(3")**

Model: 75-09AL-3  
Type: R Type to Male  
Diameter: 75mm (3")

**\$19.95**



**Quick Coupler - R Type  
Combo - 25mm (1")**

Model: M0404CR012  
Type: R Type Hose to Female  
Combo  
Diameter: 25mm (1")

**\$19.95**



**Quick Coupler - R Type  
Male To Male 100mm  
(4")**

Model: 75-09AL-4  
Type: R Type to Male  
Diameter: 100mm (4")

**\$27.95**



**Quick Coupler - R Type  
Female To Hose -  
38mm (1.5")**

Model: 75-06AL-1.5  
Type: R Type to Hose  
Diameter: 38mm (1.5")

**\$16.50**



**Quick Coupler - R Type  
Female To Hose -**

Model: 75-06AL-1  
Type: R Type to Hose  
Diameter: 25mm (1")

**\$13.50**



**Quick Coupler - R Type  
Male To Female -**

Model: 75-04AL-1.5  
Type: R Type to Female  
Diameter: 38mm (1.5")

**\$9.95**



## Quick Coupler - R Type Combo - 38mm (1.5")

Model: M0404CR152  
Type: R Type Hose to Female Combo  
Diameter: 38mm (1.5")

\$24.95



## Quick Coupler - R Type Female To Hose -

Model: 75-06AL-3  
Type: R Type to Hose  
Diameter: 75mm (3")

\$31.95



## Quick Coupler - R Type Male to Hose 50mm (2")

Model: 75-06AL-2  
Type: R Type to Hose  
Diameter: 50mm (2")

\$21.50



## Quick Coupler - R Type Male To Female - 75mm (3")

Model: 75-04AL-3  
Type: R Type to Female  
Diameter: 75mm (3")

\$19.95



## Quick Coupler - R Type Male To Female - 50mm (2")

Model: 75-04AL-2  
Type: R Type to Female  
Diameter: 50mm (2")

\$13.95



## Quick Coupler - R Type Combo - 75mm (3")

Model: M0404CR032  
Type: R Type Hose to Female Combo  
Diameter: 75mm (3")

\$48.50



## Quick Coupler - R Type Combo - 50mm (2")

Model: M0404CR022  
Type: R Type Hose to Female Combo  
Diameter: 50mm (2")

\$32.50



## Quick Coupler - R Type Female To Hose -

Model: 75-06AL-4  
Type: R Type to Hose  
Diameter: 100mm (4")

\$42.95



**Quick Coupler - R Type Male To Female -**

Model: 75-04AL-4  
Type: R Type to Female  
Diameter: 100mm (4")

**\$27.95**



**Quick Coupler - R Type Female To Male - 50mm (2")**

Model: 750506  
Type: R Type Female to Male Thread  
Diameter: 50mm (2")

**\$20.95**



**Quick Coupler - R Type Combo - 100mm (4")**

Model: M0404CR042  
Type: R Type Hose to Female Combo  
Diameter: 100mm (4")

**\$64.95**



**Quick Coupler - R Type Female To Male - 75mm (3")**

Model: 750508  
Type: R Type Female to Male Thread  
Diameter: 75mm (3")

**\$27.00**



**Quick Coupler - R Type Female To Male - 25mm (1")**

Model: 750503  
Type: R Type Female to Male Thread  
Diameter: 25mm (1")

**\$11.95**



**Quick Coupler - R Type Female To Female - 25mm (1")**

Model: 750703  
Type: R Type Female to Male Thread  
Diameter: 25mm (1")

**\$11.95**



**Quick Coupler - R Type Female To Male - 38mm (1.5")**

Model: 750505  
Type: R Type Female to Male Thread  
Diameter: 38mm (1.5")

**\$16.50**



**Quick Coupler - R Type Female To Female - 38mm (1.5")**

Model: 750705  
Type: R Type Female to Male Thread  
Diameter: 38mm (1.5")

**\$16.50**



**Quick Coupler - R Type  
Female To Female -  
50mm (2")**

*Model: 750706  
Type: R Type Female to Male  
Thread  
Diameter: 50mm (2")*

**\$20.95**



**Quick Coupler - R Type  
Female To Female -  
75mm (3")**

*Model: 750708  
Type: R Type Female to Male  
Thread  
Diameter: 75mm (3")*

**\$30.00**



**Spray Nozzle - 25mm (1")**

Model: KM0404FS012  
Type: Hose Clamp  
Diameter: 25mm (1")

**\$24.95**



**Spray & Fog Nozzle - 50mm (2")**

Model: 83-01-2  
Type: Spray and Fog Nozzle to G Type  
Diameter: 50mm (2") G Type Fitting

**\$44.95**



**Spray & Fog Nozzle - 25mm (1")**

Model: 83-05-1  
Type: Spray and Fog Nozzle to Hose Clamp Fitting  
Diameter: 25mm (1")

**\$32.95**



**Spray & Fog Nozzle - 75mm (3")**

Model: 83-01-3  
Type: Spray and Fog Nozzle to G Type  
Diameter: 75mm (3") G Type Fitting

**\$49.95**



**Spray & Fog Nozzle - 25mm (1")**

Model: 83-01-1  
Type: Spray and Fog Nozzle to G Type  
Diameter: 25mm (1") G Type Fitting

**\$32.95**



**Fire Nozzle - 300LPM - 25mm (1")**

Model: KM02523  
Type: Spray and Fog Nozzle to G Type Connector  
Flow: 150-300LPM  
Range: 15-20M  
Working Pressure: 10 Bar  
Bursting Pressure: 30 Bar  
Diameter: 25mm (1")

**\$259.00**



**Spray & Fog Nozzle - 38mm (1.5")**

Model: 83-01-1.5  
Type: Spray and Fog Nozzle to G Type  
Diameter: 38mm (1.5") G Type Fitting

**\$34.95**



**Fire Nozzle - 350LPM - 38mm (1.5")**

Model: KM02524  
Type: Spray and Fog Nozzle to G Type Connector  
Max Flow: 150-350LPM  
Diameter: 38mm (1.5")

**\$149.00**



## Hose Clamp - Zinc - 25mm (1")

Model: 86-01-1  
Material: Zinc Coated  
Diameter: 25mm (1")  
Range: 24-28mm

**\$3.75**



## Hose Clamp - Zinc - 75mm (3")

Model: 86-01-3  
Material: Zinc Coated  
Diameter: 75mm (3")  
Range: 75-80mm

**\$5.95**



## Hose Clamp - Zinc - 31.75mm (1.25")

Model: 86-01-1.25  
Material: Zinc Coated  
Diameter: 31.75mm (1.25")  
Range: 31-35mm

**\$4.00**



## Hose Clamp - Zinc - 100mm (4")

Model: 86-01-4  
Material: Zinc Coated  
Diameter: 100mm (4")  
Range: 98-105mm

**\$6.20**



## Hose Clamp - Zinc - 38mm (1.5")

Model: 86-01-1.5  
Material: Zinc Coated  
Diameter: 38mm (1.5")  
Range: 35-40mm

**\$4.50**



## Hose Clamp - Stainless - 25mm (1")

Model: 86-03SS-1  
Material: Stainless 316  
Diameter: 25mm (1")  
Range: 16-25mm  
Band Width: 12mm

**\$2.30**



## Hose Clamp - Zinc - 50mm (2")

Model: 86-01-2  
Material: Zinc Coated  
Diameter: 50mm (2")  
Range: 47-52mm

**\$5.50**



## Hose Clamp - Stainless - 31.75mm (1.25")

Model: 86-03SS-1.25  
Material: Stainless 316  
Diameter: 31.75mm (1.25")  
Range: 20-32mm  
Band Width: 12mm

**\$2.50**





**Hose Clamp - Stainless  
- 38mm (1.5")**

Model: 860303  
Material: Stainless 316  
Diameter: 38mm (1.5")  
Range: 25-40mm  
Band Width: 12mm

**\$2.70**



**Hose Clamp -  
Galvanised - 25mm**

Model: 86-02-1  
Material: Galvanised  
Diameter: 25mm (1")  
Range: 14-27mm  
Band Width: 12.7mm

**\$1.40**



**Hose Clamp - Stainless  
- 50mm (2")**

Model: 860304  
Material: Stainless 316  
Diameter: 50mm (2")  
Range: 40-60mm  
Band Width: 12mm

**\$2.90**



**Hose Clamp -  
Galvanised - 31.75mm  
(1.25")**

Model: 86-02-1.25  
Material: Galvanised  
Diameter: 31.75mm (1.25")  
Range: 18-32mm  
Band Width: 12.7mm

**\$1.50**



**Hose Clamp - Stainless  
- 75mm (3")**

Model: 860306  
Material: Stainless 316  
Diameter: 75mm (3")  
Range: 60-80mm  
Band Width: 12mm

**\$3.00**



**Hose Clamp -  
Galvanised - 38mm  
(1.5")**

Model: 86-02-1.5  
Material: Galvanised  
Diameter: 38mm (1.5")  
Range: 21-38mm  
Band Width: 12.7mm

**\$1.70**



**Hose Clamp - Stainless  
- 100mm (4")**

Model: 86-03SS-4  
Material: Stainless 316  
Diameter: 100mm (4")  
Range: 90-110mm  
Band Width: 12mm

**\$3.30**



**Hose Clamp -  
Galvanised - 50mm**

Model: 86-02-2  
Material: Galvanised  
Diameter: 50mm (2")  
Range: 27-51mm  
Band Width: 12.7mm

**\$2.00**



### Hose Clamp - Galvanised - 75mm

Model: 86-02-3  
Material: Galvanised  
Diameter: 75mm (3")  
Range: 52-76mm  
Band Width: 12.7mm

**\$2.30**



### Suction Filter - Metal - 38mm (1.5")

Model: 850803A  
Material: Metal, Zinc Plated  
Thread Diameter: 38mm (1.5")  
Thread Type: BSPT  
Filter Diameter: 125mm  
Filter Height: 100mm  
Total Height: 110mm

**\$19.95**



### Hose Clamp - Galvanised - 100mm (4")

Model: 86-02-4  
Material: Galvanised  
Diameter: 100mm (4")  
Range: 78-101mm  
Band Width: 12.7mm

**\$2.50**



### Male Pipe to Male Screw Connection, Aluminium - 38mm

Model: 850803AL  
Material: Aluminium  
Thread Diameter: 38mm (1.5")  
Thread Type: BSPT

**\$5.00**



### Suction Filter - Metal - 25mm (1")

Model: 85-08A-1  
Material: Metal, Zinc Plated  
Thread Diameter: 25mm (1")  
Thread Type: BSPT  
Filter Diameter: 125mm  
Filter Height: 100mm  
Total Height: 110mm

**\$15.95**



### Suction Filter - Metal - 50mm (2")

Model: 85-08A-2  
Material: Metal, Zinc Plated  
Thread Diameter: 50mm (2")  
Thread Type: BSPT  
Filter Diameter: 150mm  
Filter Height: 110mm  
Total Height: 120mm

**\$26.95**



### Male Pipe to Male Screw Connection, Aluminium - 25mm (1")

Model: 85-08B-1AL  
Material: Aluminium  
Thread Diameter: 25mm (1")  
Thread Type: BSPT

**\$3.00**



### Male Pipe to Male Screw Connection, Aluminium - 50mm (2")

Model: 850804AL  
Material: Aluminium  
Thread Diameter: 50mm (2")  
Thread Type: BSPT

**\$6.00**



**Suction Filter - Metal - 75mm (3")**

Model: 85-08A-3  
Material: Metal, Zinc Plated  
Thread Diameter: 75mm (3")  
Thread Type: BSPT  
Filter Diameter: 175mm  
Filter Height: 135mm  
Total Height: 145mm

**\$33.95**



**Check Valve - Brass, Female Thread - 15mm (1/2")**

Model: FV15  
Material: Brass  
Diameter: 15mm (1/2")  
Shutter: Brass  
Input Female Thread  
Output Female Thread  
Includes Stainless Steel intake

**\$7.95**



**Male Pipe to Male Screw Connection, Aluminium - 75mm (3")**

Model: 85-08B-3AL  
Material: Aluminium  
Thread Diameter: 75mm (3")  
Thread Type: BSPT

**\$9.00**



**Check Valve - Brass, Female Thread - 20mm (3/4")**

Model: FV20  
Material: Brass  
Diameter: 20mm (3/4")  
Shutter: Brass  
Input Female Thread  
Output Female Thread  
Includes Stainless Steel intake

**\$10.95**



**Suction Filter - Metal - 100mm (4")**

Model: 85-08A-4  
Material: Metal, Zinc Plated  
Thread Diameter: 100mm (4")  
Thread Type: BSPT  
Filter Diameter: 175mm  
Filter Height: 135mm  
Total Height: 145mm

**\$39.95**



**Check Valve - Brass, Female Thread - 25mm (1")**

Model: FV25  
Material: Brass  
Diameter: 25mm (1")  
Shutter: Brass  
Input Female Thread  
Output Female Thread  
Includes Stainless Steel intake

**\$11.95**



**Male Pipe to Male Screw Connection, Aluminium - 100mm**

Model: 85-08B-4AL  
Material: Aluminium  
Thread Diameter: 100mm (4")  
Thread Type: BSPT

**\$22.00**



**Check Valve - Brass, Male Thread - 25mm (1")**

Model: FV25M  
Material: Brass  
Diameter: 25mm (1")  
Shutter: Brass  
Input Male Thread  
Output Female Thread  
Includes Stainless Steel intake

**\$12.95**



## Check Valve - Brass, Female Thread - 32mm (1 1/4")

Model: FV32  
Material: Brass  
Diameter: 32mm (1 1/4")  
Shutter: Brass  
Input Female Thread  
Output Female Thread  
Includes Stainless Steel intake  
filter

**\$19.95**



## Check Valve - Brass - 38mm (1.5")

Model: 75-27-1.5  
Material: Brass  
Diameter: 38mm (1.5")

**\$33.50**



## Check Valve - Brass - 50mm (2")

Model: 75-27-2  
Material: Brass  
Diameter: 50mm (2")

**\$46.00**



**Water Pump - High Pressure, 4 Stroke - 38mm (1.5")**

Model: KM040415A  
Engine: KMG210Q  
Engine Type: 4 Stroke, Petrol  
Displacement: 212cc  
Power: 7.0HP  
Inlet / Outlet: 38mm (1.5")  
Impeller: Double  
Capacity: 12m<sup>3</sup>/h  
Lift Height Max: 75m  
Suction Height: 7m  
Weight NW: 26.5kg

**\$529.00**



**Water Pump - High Pressure, 4 Stroke - 50mm (2")**

Model: KM040462T  
Engine: KMG280  
Engine Type: 4 Stroke, Petrol  
Displacement: 270cc  
Power: 9.0HP  
Inlet / Outlet: 50mm (2.0")  
Capacity: 25m<sup>3</sup>/h  
Lift Height Max: 70m  
Suction Height: 7m  
Weight NW: 34kg

**\$695.00**



**Water Pump - High Pressure, 4 Stroke - HONDA GX160 Engine - 38mm (1.5")**

Model: KM0404152HD  
Engine: HONDA GX160  
Engine Type: 4 Stroke, Petrol  
Displacement: 163cc  
Power: 5.5HP  
Inlet / Outlet: 38mm (1.5")  
Impeller: Double  
Capacity: 20m<sup>3</sup>/h  
Lift Height Max: 55m  
Suction Height: 7m  
Weight NW: 25.0kg

**\$949.00**



**Water Pump - High Pressure, 4 stroke - 75mm (3")**

Model: KM040480T  
Engine: KMG390  
Engine Type: 4 Stroke, Petrol  
Displacement: 389cc  
Power: 13HP  
Inlet / Outlet: 75mm (3.0")  
Capacity: 40m<sup>3</sup>/h  
Lift Height Max: 60m  
Suction Height: 7m  
Weight NW: 55kg

**\$895.00**



**Water Pump - High Pressure, 4 Stroke - 50mm (2")**

Model: KM040461T  
Engine: KMG200  
Engine Type: 4 Stroke, Petrol  
Displacement: 196cc  
Power: 6.5HP  
Inlet / Outlet: 50mm (2.0")  
Capacity: 22m<sup>3</sup>/h  
Lift Height Max: 63m  
Suction Height: 7m  
Weight NW: 29kg

**\$559.00**



**Sewerage Pump - 4 Stroke - 75mm (3")**

Model: KM040480D  
Engine: KMG200  
Engine Type: 4 Stroke, Petrol  
Displacement: 196cc  
Power: 6.5HP  
Inlet / Outlet: 75mm (3")  
Capacity: 45m<sup>3</sup>/h  
Lift Height Max: 25m  
Suction Height: 7m  
Weight NW: 36kg

**\$645.00**

## Water Pump - Trash, 4 Stroke - 75mm (3")



Model: KM0404301M  
 Engine: KMG280  
 Engine Type: 4 Stroke, Petrol  
 Displacement: 270cc  
 Power: 9.0HP  
 Inlet / Outlet: 75mm (3")  
 Capacity: 55m<sup>3</sup>/h  
 Lift Height Max: 25m  
 Suction Height: 5m  
 Weight NW: 54kg

**\$995.00**

## Water Pump - 4 Stroke - 38mm (1.5")



Model: KM0404150  
 Engine: KMG100  
 Engine Type: 4 Stroke, Petrol  
 Displacement: 97cc  
 Power: 2.9HP  
 Inlet / Outlet: 38mm (1.5")  
 Capacity: 12m<sup>3</sup>/h  
 Lift Height Max: 25m  
 Suction Height: 4m  
 Weight NW: 12kg

**\$295.00**

## Chemical Pump - 4 Stroke - 50mm (2")



Model: KM040450C  
 Engine: KMG160  
 Engine Type: 4 Stroke, Petrol  
 Displacement: 163cc  
 Power: 5.5HP  
 Inlet / Outlet: 50mm (2")  
 Capacity: 25m<sup>3</sup>/h  
 Lift Height Max: 25m  
 Suction Height: 7m  
 Weight NW: 21.4kg

**\$449.00**

## Water Pump - High Pressure, Diesel - 50mm (2")



Model: KM040450HL  
 Engine: KMD186FA  
 Engine Type: Diesel  
 Displacement: 416cc  
 Power: 10HP  
 Start: Electric start with 20AH Battery  
 Type: Cast Iron Pump  
 Inlet / Outlet: 50mm (2")  
 Capacity: 600L/min  
 Lift Height Max: 50m  
 Suction Height: 7m  
 Weight NW: 78kg

**\$1,595.00**

## Water Pump - 4 Stroke - 25mm (1")



Model: KM0404104  
 Engine: KM1E139F-2  
 Engine Type: 4 Stroke, Petrol  
 Displacement: 33.5cc  
 Power: 0.8kW, 1.2HP  
 Inlet / Outlet: 25mm (1")  
 Capacity: 8m<sup>3</sup>/h  
 Lift Height Max: 30m  
 Suction Height: 7m  
 Weight NW: 7.8kg

**\$335.00**

## Water Pump - 4 Stroke - 50mm (2")



Model: KM0404201  
 Engine: KMG210S  
 Engine Type: 4 Stroke, Petrol  
 Displacement: 212cc  
 Power: 7HP  
 Inlet / Outlet: 50mm (2")  
 Capacity: 30m<sup>3</sup>/h  
 Lift Height Max: 23m  
 Suction Height: 7m  
 Weight NW: 21kg

**\$325.00**





**Water Pump - 4 Stroke -  
75mm (3")**

*Model: KM0404301*

*Engine: KMG210Q*

*Engine Type: 4 Stroke, Petrol*

*Displacement: 212cc*

*Power: 7HP*

*Inlet / Outlet: 75mm (3")*

*Capacity: 60m<sup>3</sup>/h*

*Lift h.max: 28m*

*Suction Height: 7m*

*Weight NW: 28.5kg*

**\$369.00**



## Chainsaw - 25.4cc, 10\"/>

*Model: KM0403250H*  
*Engine Type: 2 Stroke, 25:1*  
*Displacement: 25.4cc*  
*Power: 0.9kW, 1.2HP*  
*Fuel Consumption: 560g/kWh*  
*Spur Sprocket: 6 teeth*  
*Bar: 10\"/>*

**\$239.00**



## Chainsaw - 55cc, 22\"/>

*Model: KM0403580-22*  
*Engine Type: 2 Stroke, 25:1*  
*Displacement: 55cc*  
*Power: 2.4kW, 3.3HP*  
*Fuel Consumption: 560g/kWh*  
*Spur Sprocket: 7 teeth, 0.325\"/>*

**\$285.00**



## Chainsaw - 25.4cc, 10\"/>

*Model: KM0403251*  
*Engine Type: 2 Stroke, 25:1*  
*Displacement: 25.4cc*  
*Power: 0.9kW, 1.2HP*  
*Fuel Consumption: 560g/kWh*  
*Spur Sprocket: 8 teeth*  
*Bar: 10\"/>*

**\$275.00**



## Chainsaw - 72cc, 24\"/>

*Model: KM0403720-24*  
*Engine Type: 2 Stroke, 25:1*  
*Displacement: 72cc*  
*Power: 3.6kW, 5HP*  
*Fuel Consumption: 560g/kWh*  
*Spur Sprocket: 6 teeth, 3/8\"/>*

**\$659.00**



## Chainsaw - 55cc, 20\"/>

*Model: KM0403580A-20*  
*Engine Type: 2 Stroke, 25:1*  
*Displacement: 55cc*  
*Power: 2.4kW, 3.3HP*  
*Fuel Consumption: 560g/kWh*  
*Spur Sprocket: 7 teeth, 0.325\"/>*

**\$269.00**



## Chainsaw - 92cc, 36\"/>

*Model: KM0403920*  
*Engine Type: 2 Stroke, 25:1*  
*Displacement: 92cc*  
*Power: 5.2kW, 7.1HP*  
*Fuel Consumption: 560g/kWh*  
*Spur Sprocket: 6 teeth, 3/8\"/>*

**\$739.00**



### Chainsaw - 36" Petrol 105cc - Premier Quality

Model: KM0403070  
Power Type: Single Cylinder, 2 Stroke,  
Air-cooling petrol engine, 25:1  
Displacement : 105CC  
Power: 4.8kW  
Relevant Power Speed: 8000rpm  
Work Speed: 6000-10000rpm  
Fuel Tank Capacity : 1200ml  
Guide Bar Size : 36"  
Chain: 0.063" Stihl Chain (American)  
Engine Weight: 12.5kg  
Machine Weight: 15.5kg  
Can only be used as a mounted slab saw



\$758.95

### Manual Chainsaw Sharpener

Model: ES0403009  
Type: Manual Chainsaw  
Sharpener  
Included: 4.8mm File



\$29.95

### Chainsaw Grinder - 12VDC

Model: ES0403004  
Rated Voltage: 12 VDC  
Rated Power: 85w  
RPM: 5500 No Load  
Includes: Chain Size Gauge, Bat-  
tery Clips, Grinding Disk  
Colour: Orange  
Weight NW: 2.1kg



\$109.00

### Chainsaw Grinder - 230V

Model: ES0403006  
Voltage: 230V  
Rated Power: 230W  
No Load Speed: 3000rpm

Professional



\$179.00



## Grinding Disk - 108 x 3.2mm

Model: ES0403001D  
 Diameter: 108mm  
 Thickness: 3.2mm  
 Arbor Size: 23mm  
 For: 1/4", 3/8" and .325  
 (25 and 55cc chainsaws)

**\$9.95**



## Grinding Disk - 145 x 22.3 x 4.7mm

Model: ES0403006D2

**\$9.95**



## Grinding Disk - 105 x 3.2mm

Model: ES0403004D  
 Diameter: 105mm  
 Thickness: 3.2mm  
 Arbor Size: 22mm  
 For: 1/4", 3/8" and .325  
 (25 and 55cc chainsaws)

**\$9.95**



## Scraper Knife

Model: KMSK-02

**\$3.95**



## Grinding Disk - 105 x 4.7mm

Model: KMGD-02  
 (Old Model Code: ES0403004D2)  
 Diameter: 105mm  
 Thickness: 4.7mm  
 Arbor Size: 22mm  
 For: 3/8"  
 (72cc chainsaws)

**\$9.95**



## Chainsaw File - 4.0mm, 1/4" & 3/8"

Model: KM04CF0532  
 Type: Chainsaw File 4.00mm, for 1/4" and 3/8" pitch  
 (For 25cc Chainsaw & for 10" 12" 14" Pruning Saw Chains)

**\$3.95**



## Grinding Disk - 145 x 22.3 x 3.2mm

Model: ES0403006D1

**\$9.95**



## Chainsaw File - 4.8mm, 3/16" & .325"

Model: KM04CF0316  
 Type: Chainsaw File 4.80mm, for 3/16" and .325" pitch  
 (For 55cc Chainsaw, 16, 18, 20, 22 Oregon Chains)

**\$3.95**



**Chainsaw File - 5.5mm,  
3/8" & .404"**

Model: KM04CF01364  
Type: Chainsaw File 5.5mm, for  
3/8" and .404" pitch  
(For 72cc Chainsaw, 20 and 24"  
Stihl Chains)

**\$3.95**



**Chain Break /  
Riveter Combo**

Model: Chain Break / Riveter  
Combo  
Colour: Blue  
Included: ES0403CB01 &  
ES0403CR01

**\$169.00**



**Chainsaw File Handle -  
Screw**

Model: ES0403SF-HD  
Type of Fitting: Screw  
Height: 125mm

Note: File not included

**\$3.50**



**Chainsaw File Handle -  
Press**

Model: ES0403SF-HD1  
Type of Fitting: Push  
Height: 120mm

Note: File not included

**\$4.50**



**Chain Breaker Tool**

Model: ES0403CB01  
Type: Chain Break Unit  
Colour: Blue

**\$89.00**



**Chain Riveter Tool**

Model: ES0403CR01  
Type: Chain Riveter Unit  
Colour: Blue

**\$89.00**



## Wedge - 5"

Model: ES0403PW-1  
Type: Spiked Felling Wedge  
Material: Plastic  
Size: 127mm, (5")

**\$9.95**



## Wedge - Metal End - 8"

Model: ES0403PW-2A  
Type: Spiked Felling Wedge  
Material: Plastic / Metal End Cap  
Size: 203mm, (8")

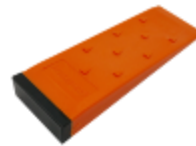
**\$17.95**



## Wedge - 8"

Model: ES0403PW-2  
Type: Spiked Felling Wedge  
Material: Plastic  
Size: 203mm, (8")

**\$12.95**



## Wedge - Metal End - 10"

Model: ES0403PW-3A  
Type: Spiked Felling Wedge  
Material: Plastic / Metal End Cap  
Size: 254mm, (10")

**\$19.95**



## Wedge - 10"

Model: ES0403PW-3  
Type: Spiked Felling Wedge  
Material: Plastic  
Size: 254mm, (10")

**\$18.95**



## Wedge - Metal End - 12"

Model: ES0403PW-4A  
Type: Spiked Felling Wedge  
Material: Plastic / Metal End Cap  
Size: 305mm, (12")

**\$22.00**



## Wedge - Metal End - 5"

Model: ES0403PW-1A  
Type: Spiked Felling Wedge  
Material: Plastic / Metal End Cap  
Size: 127mm, (5")

**\$14.95**



## Chainsaw Disk / File Template

Model: ES0403SFG-1  
Measures: Depth Gauge Radius & Chain Pitch  
Material: Plastic  
Size: 110mm x 35mm x 2mm

**\$3.95**



### Chainsaw Bar File

Model: ES0403GBF  
Material: Plastic / Metal  
Size: 120mm x 60mm x 40mm

\$12.95



### Log Holder

Model: KM0403LS-1  
Max Holding Weight: 80Kg

\$59.95



### Log Hook

Model: ES0403LH05

\$24.95



### Filing Vice

Model: ES0403FV  
Type: Filing Vice

\$19.95



### Log Hook -10"

Model: ES0403LH04

\$13.95



### Chainsaw - Carry Box

Model: KM0403BX1  
Internal Size: 400(L) x 240(W) x 230 (H)mm  
Box only - does not include chainsaw or bar cover

\$35.00



### Log Holder

Model: KM0403LS  
Max Holding Weight: 100Kg  
Weight NW: 11.4kg  
Included: Chainsaw Holder

\$125.00



### Chainsaw Bag

Model: KM0409460  
Type: Premium, Heavy Duty  
Colour: Grey  
Chainsaw Bag for KM0403580  
Up To 20" Bar

\$29.95



## Chainsaw Bag

Model: KM0409460-22 to 24  
 Type: Premium, Heavy Duty  
 Colour: Orange  
 Chainsaw Bag for KM0403580  
 22-24" Bar

**\$31.95**



## Protective Leg Trousers (Zipped Leg)

Model: HT008-O  
 Shell: 65% Polyester / 35% Cotton  
 Lining: 100% Polyester  
 Waterproof and with impact resistant  
 Adjustable belt with buckle & 2 Elastic Bands  
 Professional for brush cutter and other kinds of garden work.  
 Colour: Orange

**\$39.95**



## Safety Glasses - Yellow

Model: KM1502010  
 Nylon Temples  
 9D curve based PC lens  
 Comfortable rubber nose pad  
 Exceptional coverage  
 Lightweight  
 Better abrasion resistance  
 Anti-fog treatment  
 Approvals: CE, EN 166:2002-04  
 ANSI Z87.1-2003

**\$9.95**



## Protective Leg Trousers (Zipped Leg) - Black

Model: HT008-G  
 Shell: 65% Polyester / 35% Cotton  
 Lining: 100% Polyester  
 Waterproof and with impact resistant  
 Adjustable belt with buckle & 2 Elastic Bands  
 Professional for brush cutter and other kinds of garden work.  
 Colour: Black

**\$39.95**



## Safety Glasses - Black

Model: KM1502019  
 Exceptional coverage  
 Better abrasion resistance  
 Anti-fog treatment  
 Approvals: CE, EN 166:2002-04  
 ANSI Z87.1-2003  
 Colour: Tinted Black Lenses

**\$9.95**



## Chainsaw Trousers - Braces

Model: T002-B  
 Type: Braces  
 Material: 100% Durable Polyester Oxford (120g/m<sup>2</sup>)  
 Waist: 104-122cm  
 Height: 182-188cm  
 Class: Class 1 Type A -20ms  
 Approvals: EN 381-5 CE  
 Colour: Blue

**\$134.95**

Model: T002-BK  
 As above  
 Colour: Black



### Chainsaw Trousers - Zip up Legs

Model: T004-A-B  
Type: Zip Up Legs  
Material: 100% Durable Polyester Oxford (120g/m<sup>2</sup>)  
Waist: 80-105cm  
Height: 170-182cm  
Class: Class 1 Type A -20ms  
Approvals: EN 381-5 CE  
Colour: Navy Blue

\$119.95



### Chainsaw Trousers - Strap up Legs - 40

Model: T004-D-B-40 or T004-D-BK-40  
Type: Straps around back of legs  
Material: 100% Durable Polyester Oxford (120g/m<sup>2</sup>)  
Waist: 80-115cm  
Height: 101cm  
Class: Class 1 Type A -20ms  
Approvals: EN 381-5 CE  
Colour: Navy Blue or Black

\$115.95



### Chainsaw Trousers - Zip up Legs

Model: T004-A-O  
Type: Zip Up Legs  
Material: 100% Durable Polyester Oxford (120g/m<sup>2</sup>)  
Waist: 80-105cm  
Height: 170-182cm  
Class: Class 1 Type A -20ms  
Approvals: EN 381-5 CE  
Colour: Orange

\$119.95



### Chainsaw Helmet

Model: KM1504120  
Type: Helmet  
Material: PE Helmet, ABS earmuffs  
4 Point cradle suspension  
Mesh Visor provides eye and face protection  
Adjustable Headgear  
Ergonomic shawl provides neck protection  
Chin Strap  
Colour: Black & Orange  
SNR: 23dB  
Approvals: EN 397:1995, EN 352-3:2002, EN1731:2006

\$45.95



### Chainsaw Trousers - Strap up Legs - 36

Model: T004-D-B-36 or T004-D-BK-36  
Type: Straps around back of legs  
Material: 100% Durable Polyester Oxford (120g/m<sup>2</sup>)  
Waist: 80-115cm  
Height: 90cm  
Class: Class 1 Type A -20ms  
Approvals: EN 381-5 CE  
Colour: Navy Blue or Black

\$115.95



### Face Shield

Model: KM1504005-M  
Adjustable Headgear  
SNR: 28dB  
Approvals: EN 352-1:2002  
EN 1731:2006  
Colour: Black & Orange

\$34.95





## Chainsaw Protective Gloves - 11

Model: KM1509501-11 (Size 11)  
 Chain saw protective gloves with extra anti-vibration function  
 Goat skin leather reinforced palm  
 Back of the left hand padded with 10 layers of protective fabric-dyneema 20m/s, class 1 or 24m/s class 2  
 Spandex knitted fabric back  
 Velcro wrist closure  
 Approvals: EN381-7:1997, EN 420, EN 388:2003, 3122  
 Size 11 (250mm)  
 Colour: Black, Orange & White

**\$38.95**



## Ear Muffs, Padded Band - 28dB

Model: KM1503007-B  
 Adjustable Padded Head Band  
 SNR: 28dB  
 Approvals: EN 352-1:2002  
 Colour: Black & Orange

**\$19.95**



## Chainsaw Protective Gloves - 12

Model: KM1509501-12 (Size 12)  
 Chain saw protective gloves with extra anti-vibration function  
 Goat skin leather reinforced palm  
 Back of the left hand padded with 10 layers of protective fabric-dyneema 20m/s, class 1 or 24m/s class 2  
 Spandex knitted fabric back  
 Velcro wrist closure  
 Approvals: EN381-7:1997, EN 420, EN 388:2003, 3122  
 Size 12(260mm)  
 Colour: Black, Orange & White

**\$38.95**



## Ear Muffs, Solid Band - 28dB

Model: KM1503006-B  
 Adjustable Head Band  
 SNR: 28dB  
 Approvals: EN 352-1:2002  
 Colour: Black & Orange

**\$19.95**



## Chainsaw Protective Gloves - 12

Model: KM1509500-12  
 Size: 12 (260mm)  
 Chain saw protective gloves  
 Cow grain leather reinforced palm  
 Back of the left hand padded with 10 layers of protective fabric-dyneema 20m/s, class 1 or 24m/s class 2  
 Spandex knitted fabric back  
 Velcro wrist closure  
 Approvals: EN381-7:1997, EN 420, EN 388:2003, 3122  
 Colour: Black, Orange & White

**\$34.95**



## Ear Muffs, Padded Band - 32dB

Model: KM1503007-C  
 Adjustable Padded Head Band  
 SNR: 32dB  
 Approvals:  
 Colour: Black & Green

**\$24.95**





**Chainsaw Chain -  
Carving - 10", 1/4" x  
0.050"**

Model: 30-10A  
Manufacturer:  
Bar Length: 10"  
Drive Links: 60  
Pitch: 1/4"  
Gauge: 0.050"  
File Size: 4.00mm

**\$32.50**



**Chainsaw Chain -  
Oregon - 16", .325" x  
0.058"**

Model: KM0403C16  
Manufacturer: Oregon  
Bar Length: 16"  
Drive Links: 64  
Pitch: .325"  
Gauge: 0.058"  
File Size: 4.80mm

**\$42.50**



**Chainsaw Chain -  
Oregon - 10", 3/8" x  
0.050"**

Model: KM0403C10  
Manufacturer: Oregon  
Bar Length: 10"  
Drive Links: 40  
Pitch: 3/8"  
Gauge: 0.050"  
File Size: 4.00mm  
For: KM0403250 & M0408MF005

**\$32.50**



**Chainsaw Chain -  
Oregon - 18", .325" x  
0.058"**

Model: KM0403C18R  
Manufacturer: Oregon  
Bar Length: 18"  
Drive Links: 72  
Pitch: .325"  
Gauge: 0.058"  
File Size: 4.80mm  
For: KM0403520B & KM0403580

**\$48.50**



**Chainsaw Chain -  
Oregon - 12", 3/8" x 0.050"**

Model: KM0403C12  
Manufacturer: Oregon  
Bar Length: 12"  
Drive Links: 44  
Pitch: 3/8"  
Gauge: 0.050"  
File Size: 4.00mm  
For: KM0408MF005A & KM0408246

**\$38.95**



**Chainsaw Chain -  
Oregon - 20", .325" x  
0.058"**

Model: KM0403C20  
Manufacturer: Oregon  
Bar Length: 20"  
Drive Links: 76  
Pitch: .325"  
Gauge: 0.058"  
File Size: 4.80mm  
For: KM0403580

**\$52.00**



**Chainsaw Chain -  
Oregon - 14", 0.325" x  
0.058"**

Model: KM0403C14  
Manufacturer: Oregon  
Bar Length: 14"  
Drive Links: 60  
Pitch: 0.325"  
Gauge: 0.058"  
File Size: 4.00mm

**\$40.00**



**Chainsaw Chain - Stihl  
- 20", .3/8" x 0.063"**

Model: KM0403C20S  
Manufacturer: Stihl  
Bar Length: 20"  
Drive Links: 72  
Pitch: 3/8"  
Gauge: 0.063"  
File Size: 5.5mm

**\$59.00**



## Chainsaw Chain - Oregon - 22", .325" x 0.058"

Model: KM0403C22  
 Manufacturer: Oregon  
 Bar Length: 22"  
 Drive Links: 86  
 Pitch: .325"  
 Gauge: 0.058"  
 File Size: 4.80mm  
 For: KM0403580

**\$65.00**



## Chainsaw Chain - Stihl - 36", .404" x 0.063"

Model: KM0403C36S (30-36A)  
 Manufacturer: Stihl  
 Bar Length: 36"  
 Drive Links: 104  
 Pitch: .404"  
 Gauge: 0.063"  
 File Size: 5.5mm

**\$82.00**



## Chainsaw Chain - Stihl - 24", .3/8" x 0.063"

Model: KM0403C24  
 Manufacturer: Stihl  
 Bar Length: 24"  
 Drive Links: 84  
 Pitch: 3/8"  
 Gauge: 0.063"  
 File Size: 5.5mm  
 For: KM0403720

**\$65.00**



## Chainsaw Chain - Stihl - 36", 3/8" x 0.063"

Model: 30-36  
 Manufacturer: Stihl  
 Bar Length: 36"  
 Drive Links: 114  
 Pitch: .3/8"  
 Gauge: 0.063"  
 File Size: 5.5mm

**\$82.00**



## Chainsaw Chain - Longer - 25", 0.404" x 0.063"

Model: 30-24C  
 Manufacturer: Longer  
 Bar Length: 25"  
 Drive Links: 76  
 Pitch: .404"  
 Gauge: 0.063"  
 File Size: 5.5mm  
 Chisel: Full

**\$44.00**



## Chainsaw Chain - Longer - 100ft, 0.325", 0.058"

Model: KM04C21BP  
 Manufacturer: Longer  
 Pitch: .325"  
 Gauge: 0.058"  
 File Size: 4.80mm  
 Length: 100ft

**\$549.00**



## Chainsaw Chain - Stihl - 36", .3/8" x 0.063"

Model: KM0403C36  
 Manufacturer: Stihl  
 Bar Length: 36"  
 Drive Links: 114  
 Pitch: 3/8"  
 Gauge: 0.063"  
 File Size: 5.5mm

**\$81.67**



## Chainsaw Chain - Oregon - 100ft, 3/8", 0.058", 1640 Links

Model: 30-73LP100G  
 Manufacturer: Oregon  
 Part Number:  
 Drive Links: 1640 (100ft)  
 Pitch: 3/8"  
 Gauge: 0.058"  
 Full Chisel

**\$695.00**



**Chainsaw Chain - Oregon - 100ft, 3/8", 0.063", 1640 Links**

Model: 30-75LP100G  
 Manufacturer: Oregon  
 Part Number:  
 Drive Links: 1640 (100ft)  
 Pitch: 3/8"  
 Gauge: 0.063"  
 Full Chisel  
 File Size: 5.5mm

**\$695.00**



**Chainsaw Bar - Standard - 12", 3/8" x 0.050"**

Model: KM0403B12  
 Type: Roller Tip  
 Bar Length: 12"  
 Part Number:  
 Gauge: 0.050"  
 For: KM0408246  
 (Suits Chain: 12", Drive Links 44, Pitch 3/8", Gauge 0.050", File Size 4.00mm)

**\$14.95**

**Carbided Saw Chain 3/8" Pitch, 0.050"**

Model: 30TS-72LP25  
 Gauge Full Chisel  
 Small Carbide 25ft

**\$398.00**



**Chainsaw Bar - Standard - 14", 0.325" x 0.058"**

Model: KM0403B14  
 Type: Roller Tip  
 Bar Length: 14"  
 Part Number: BE14-60-5810P  
 Gauge: 0.058"  
 For: KM0403580-22, KM0403580-22  
 (Suits Chain: 14", Drive Links 60, Pitch 0.325", Gauge 0.058", File Size 4.00mm)

**\$15.95**



**Chainsaw Bar - Carving - 10", 1/4" x 0.050"**

Model: KM0403B10C  
 Type: Solid Nose  
 Bar Length: 10"  
 Part Number:  
 Gauge: 0.050"  
 For: KM0403251  
 (Suits Chain: 10", Drive Links 60, Pitch 1/4", Gauge 0.050", File Size 4.00mm)

**\$32.50**



**Chainsaw Bar - Standard - 16", 0.325" x 0.058"**

Model: KM0403B16  
 Type: Roller Tip  
 Bar Length: 16"  
 Part Number:  
 Gauge: 0.058"  
 For: KM0403520B & KM0403580  
 (Suits Chain: 16", Drive Links 64, Pitch 0.325", Gauge 0.058", File Size 4.80mm)

**\$16.50**



**Chainsaw Bar - Standard - 10", 3/8" x 0.050"**

Model: KM0403B10  
 Type: Roller Tip  
 Bar Length: 10"  
 Part Number: AP10-40-509P  
 Gauge: 0.050"  
 For: KM0403250 & M0408MF005  
 (Suits Chain: 10", Drive Links 40, Pitch 3/8", Gauge 0.050", File Size 4.00mm)

**\$9.95**



**Chainsaw Bar - Standard - 18", 0.325" x 0.058"**

Model: KM0403B18  
 Type: Roller Tip  
 Bar Length: 18"  
 Part Number: BE18-72-5810P  
 Gauge: 0.058"  
 For: KM0403520B & KM0403580  
 (Suits Chain: 18", Drive Links 72, Pitch 0.325", Gauge 0.058", File Size 4.80mm)

**\$17.50**



**Chainsaw Bar -  
Standard - 20", 0.325" x  
0.058"**

Model: KM0403B20-0.058  
Type: Roller Tip  
Bar Length: 20"  
Part Number: BE20-76-5812P  
Gauge: 0.058"  
For: KM0403580  
(Suits Chain: 20", Drive Links 76,  
Pitch 0.325", Gauge 0.058",  
File Size 4.80mm)

**\$19.50**



**Chainsaw Bar -  
Standard - 25", 0.404" x  
0.063"**

Model: 29-25  
Type: Solid Nose  
Bar Length: 25"  
Pitch: 0.404"  
Gauge: 0.063" (1.6mm)  
(Suits Chain: 25", Drive Links 76,  
Pitch .404", Gauge 0.063", File Size  
5.50mm)

**\$76.95**



**Chainsaw Bar -  
Standard - 20", 3/8" x  
0.063"**

Model: KM0403B20-0.063  
Type: Roller Tip  
Bar Length: 20"  
Part Number: AS20-72-6311P  
Gauge: 0.063"  
For: KM0403720  
(Suits Chain: 20", Drive Links 72,  
Pitch 3/8", Gauge 0.063",  
File Size 5.50mm)

**\$22.50**



**Chainsaw Bar -  
Standard - 36", .3/8" x  
0.063"**

Model: KM0403B36-0.063"  
(29-36)  
Type: Solid Nose  
Bar Length: 36"  
Part Number:  
Gauge: 0.063"  
(Suits Chain: 36", Drive Links 114, Pitch  
3/8", Gauge 0.063", File Size 5.50mm)

**\$84.95**



**Chainsaw Bar -  
Standard - 22", 0.325" x  
0.058"**

Model: KM0403B22  
Type: Roller Tip  
Bar Length: 22"  
Part Number: BE22-86-5811P  
Gauge: 0.058"  
For: KM0403580  
(Suits Chain: 22", Drive Links 86, Pitch  
0.325", Gauge 0.058", File Size 4.80mm)

**\$24.00**



**Chainsaw Bar -  
Standard - 36", 0.404" x  
0.063"**

Model: KM0403B36-0.063"  
(29-36A)  
Type: Solid Nose  
Bar Length: 36"  
Part Number:  
Gauge: 0.063"  
Pitch: 0.404"  
(Suits Chain: 36", Drive Links 114, Pitch 3/8",  
Gauge 0.063", File Size 5.50mm)

**\$84.95**



**Chainsaw Bar -  
Standard - 24", 3/8" x  
0.063"**

Model: KM0403B24  
Type: Solid Nose  
Bar Length: 24"  
Part Number:  
Gauge: 0.063"  
For: KM0403720  
(Suits Chain: 24", Drive Links 84, Pitch  
3/8", Gauge 0.063", File Size 5.50mm)

**\$74.95**





## Shredder Chipper - 4 Stroke - 75mm (3")

Model: KM0421196  
Engine: KMG200  
Displacement: 196cc  
Power: 6.5HP  
Type: Push  
Max. Chipping  
Diameter: 76mm (3")  
Colour: Orange  
Weight NW: 72kg

**\$1,149.00**



## Shredder Chipper - Diesel - 100mm (4")

Model: KM0421389D  
Engine: KMD178F  
Displacement: 296cc  
Power: 5.5HP  
Starting: Electric  
Type: Push / Towable  
Max. Chipping  
Diameter: 100mm (4")  
Colour: Orange  
Weight NW: 108kg

**\$1,559.00**



## Shredder Chipper - 4 Stroke - 100mm (4")

Model: KM0421389  
Engine: KMG390  
Displacement: 389cc  
Power: 13HP  
Type: Push / Towable  
Max. Chipping  
Diameter: 100mm (4")  
Colour: Orange  
Weight NW: 105kg

**\$1,645.00**



**Shredder Chipper - Pro  
- 80mm (3.1")**

Model: KM0421196PRO  
 Engine: KMG200  
 Displacement: 196cc  
 Power: 6.5HP  
 Belt: V-Belt  
 Blade Length: 150mm  
 Blade Type: Twin Reversible  
 Max. Chipping Diameter: 80mm (3.1")  
 Max. Chipping Width: 150mm (6")  
 Max. Roller RPM: 2400  
 Chipper Capacity: 3-5CBM/hour  
 Tyre: 4.10/3.5-4  
 Colour: Black & Orange  
 Weight NW: 85kg

**\$1,595.00**



**Shredder Chipper - Pro  
- 100mm (4")**

Model: KM0421389PRO  
 Engine: KMG410  
 Displacement: 407cc  
 Power: 15HP  
 Fuel Capacity: 6L  
 Oil Capacity: 1.1L  
 Belt: 2 piece V-Belt  
 Blade Length: 310mm  
 Blade Type: Twin Reversible  
 Max. Chipping Diameter: 100mm (4")  
 Max. Chipping Width: 310mm  
 Max. Roller RPM: 2000  
 Chipper Capacity: 4-6CBM/hour  
 Tyre: 6.5-8, 4.0-8, 4.8-8  
 Weight NW: 180kg

**\$2,249.00**

Model: KM0421389PROE  
 Same as Model KM0421389PRO  
 Starter: Electric

**\$2,499.00**



**Shredder Chipper - Pro,  
Electric Motor - 80mm  
(3")**

Model: DR-WC-65E  
 Voltage: 230 Volts  
 Power: 2200 Watts  
 RPM: 2800  
 Drive: Twin V-belts  
 Blade Length: 150mm  
 Blade Type: Twin Reversible  
 Max. Chipping Diameter: 80mm (3")  
 Max. Chipping Width: 150mm (6")  
 Max. Roller RPM: 1800  
 Tire: 4.1 / 3.5-4  
 Colour: Black & Orange  
 Overall Height: 870mm  
 Overall Length: 850mm  
 Overall Width: 555mm  
 Weight NW: 85kg

**\$1,295.00**



**Chipper - Elec. Start,  
Pro - Hydraulic Feed -  
120mm (4.7")**

Model: DR-GS-155F  
 Engine: Duncar, DH420  
 Displacement: 407cc  
 Power: 15HP, 4 Stroke, Petrol  
 Fuel Capacity: 6.5L  
 Oil Capacity: 1.1L  
 Starter: Recoil / Electric  
 Hydraulic Pump: 10ml/r, 20mpa  
 Hydraulic Motor: 0-600rpm, 240NM  
 Hydraulic Oil: 4L  
 Belt: 2 piece V-Belt  
 Blade Length: 200mm  
 Blade: 2  
 Max. Chipping Diameter: 120mm  
 Max. Chipping Width: 200mm  
 Max. Roller RPM: 2250  
 Chipper Capacity: 4-6CBM/hour  
 Tyre: 16 X 6.5-8  
 Overall Size: 2150(L) x 830(W) x 1560(H)mm  
 Weight NW: 293kg

**\$4,799.00**







## Engine - 4 Stroke - 2.8HP - Q Type

Model: KMG90Q  
 Displacement: 87cc  
 Power: 2.8HP  
 RPM: 4000  
 Start: Pull  
 Fuel Consumption: 340g/kWh  
 Fuel Tank: 1.6L  
 Oil Tank: 0.35L  
 Type: OHV  
 Colour: Orange & Black  
 Weight NW: 11kg

**\$219.00**



## Engine - Diesel -5.0HP

Model: KMD178F  
 Displacement: 296cc  
 Power: 5HP  
 Start: Electric  
 Size: 48 x 46 x 52cm  
 Colour: Orange & Black  
 Weight NW: 33kg

**\$995.00**



## Engine - 4 Stroke - 6.5HP - Q Type

Model: KMG200Q  
 Displacement: 196cc  
 Power: 6.5HP  
 RPM: 4000  
 Start: Pull  
 Fuel Consumption: 340g/kWh  
 Fuel Tank: 3.6L  
 Oil Tank: 0.6L  
 Type: OHV  
 Colour: Orange & Black  
 Weight NW: 13.6kg

**\$249.00**



## Engine - 4 Stroke - 9.0HP

Model: KMG280Q  
 Displacement: 284cc  
 Power: 9.0HP  
 RPM: 4000  
 Start: Pull  
 Fuel Consumption: 340g/kWh  
 Fuel Tank: 5.9L  
 Oil Tank: 1.1L  
 Type: OHV  
 Shaft Size:  $\varnothing$  25.4mm Length 72.2mm  
 Colour: Orange & Black  
 Weight NW: 25kg

**\$449.00**



## Engine - 4 Stroke - 6.5HP - S Type

Model: KMG200S  
 Displacement: 196cc  
 Power: 6.5HP  
 RPM: 4000  
 Start: Pull  
 Fuel Consumption: 340g/kWh  
 Fuel Tank: 3.6L  
 Oil Tank: 0.6L  
 Type: OHV  
 Colour: Orange & Black  
 Weight NW: 13.6kg

**\$249.00**



## Engine - 4 Stroke - 13HP - Q Type

Model: KMG390Q  
 Displacement: 389cc  
 Power: 13HP  
 RPM: 4000  
 Start: Pull  
 Fuel Consumption: 340g/kWh  
 Fuel Tank: 6.5L  
 Oil Tank: 1.1L  
 Type: OHV  
 Shaft Size:  $\varnothing$  25.4mm Length 73mm  
 Colour: Orange & Black  
 Weight NW: 31kg

**\$489.00**



**Engine - 4 Stroke -  
13HP - S Type**

Model: KMG390S  
Displacement: 389cc  
Power: 13HP  
RPM: 4000  
Start: Pull  
Fuel Consumption: 340g/kWh  
Fuel Tank: 6.5L  
Oil Tank: 1.1L  
Type: OHV  
Colour: Orange & Black  
Weight NW: 31kg

**\$489.00**



**Engine - 4 Stroke -  
15HP**

Model: KMG430RES  
Displacement: 420cc  
Power: 15HP  
RPM: 4000  
Start: Pull, Electric Start  
Fuel Consumption: 340g/kWh  
Fuel Tank: 6L  
Oil Tank: 1.1L  
Type: OHV  
Ratio: 2:1 Reduction Gearbox  
Colour: Orange & Black

**\$689.00**



**Engine - Elec. Start,  
4 Stroke - 13HP**

Model: KMG390SE  
Displacement: 389cc  
Power: 13HP  
RPM: 4000  
Start: Pull, Electric  
Fuel Consumption: 340g/kWh  
Fuel Tank: 6.5L  
Oil Tank: 1.1L  
Type: OHV  
Shaft Size: Diameter 25mm Length  
60mm  
Colour: Orange & Black

**\$619.00**



**Engine - 4 Stroke -  
15HP**

Model: KMG420ES  
Displacement: 420cc  
Power: 15HP  
RPM: 4000  
Start: Electric Start / Pull  
Fuel Consumption: 340g/kWh  
Fuel Tank: 6L  
Oil Tank: 1.1L  
Type: OHV  
Colour: Orange & Black  
Weight NW: 31kg

**\$689.00**



**Engine - 4 Stroke -  
15HP**

Model: KMG420  
Displacement: 420cc  
Power: 15HP  
RPM: 4000  
Start: Pull  
Fuel Consumption: 340g/kWh  
Fuel Tank: 6L  
Oil Tank: 1.1L  
Type: OHV  
Colour: Orange & Black  
Weight NW: 31kg

**\$569.00**



## Auger - One Person

Model: KM0408003  
Engine: KM1E48F  
Displacement: 63.6cc  
Power: 2.0kW, 2.7HP  
Fuel Tank: 1.2L  
Auger Rotation Speed RPM: 0-250  
Weight NW: 14.5kg  
Included: 100mm Auger Bit

**\$429.00**



## Auger - Two Person

Model: KM0408005  
Engine: KM1E 44F-2  
Displacement: 51.7cc  
Power: 1.4kW, 2HP  
Fuel Tank: 1.2L  
Auger Rotation Speed RPM: 0-250  
Weight NW: 16kg  
Included: 200mm Auger Bit

**\$379.00**



## Auger - One Person

Model: KM0408002  
Engine: KM1E 44F-2  
Displacement: 51.7cc  
Power: 1.25kW, 1.8HP  
Fuel Tank: 1.2L  
Auger Rotation Speed RPM: 0-250  
Weight NW: 12.5kg  
Included: 100mm Auger Bit

**\$349.00**



## Auger - One Person

Model: KM0408001  
Engine: KM1E 44F-2  
Displacement: 51.7cc  
Power: 1.25kW, 1.8HP  
Fuel Tank: 1.2L  
Auger Rotation Speed RPM: 0-250  
Weight NW: 14.5kg  
Included: 100mm Auger Bit

**\$319.00**



\$12.95

**Auger Extension - 200mm**

Model: KMDE20

200mm Auger Extension



\$24.95

**Auger Extension - 600mm**

Model: KM04ED01

600mm Auger Extension



\$29.95

**Auger Extension - 1000mm**

Model: KM04ED02

1000mm Auger Extension



\$5.95

**Auger - Split Pin**

Model: KMDA-02

Pin Diameter: 8mm

Pin shank length: 40mm



\$35.00

**Auger - Adaptor for Stihl Auger**

Model: KMDA-01

Pin Diameter: 8mm

6 star spline to 20mm round



\$44.00

**Auger Bit - Single Impeller - 100mm**

Model: KMD10005

Length: 800mm, Diameter: 100mm



\$55.00

**Auger Bit - Single Impeller - 150mm**

Model: KMD15001

Length: 800mm, Diameter: 150mm



\$59.00

**Auger Bit - Single Impeller - 200mm**

Model: KMD20001

Length: 800mm, Diameter: 200mm



**Auger Bit - Single  
Impeller - 250mm**

*Model: KMD25001  
Length: 800mm, Diameter: 250mm*

**\$75.00**



**Auger Bit - Double  
Impeller - 150mm**

*Model: KMD15008  
Length: 1000mm, Diameter: 150mm*

**\$85.00**



**Auger Bit - Single  
Impeller - 300mm**

*Model: KMD30001  
Length: 800mm, Diameter: 300mm*

**\$85.00**



**Auger Bit - Double  
Impeller - 200mm**

*Model: KMD20008  
Length: 1000mm, Diameter: 200mm*

**\$105.00**



**Auger Bit - Double  
Impeller - 100mm**

*Model: KMD10008  
Length: 1000mm, Diameter: 100mm*

**\$68.00**



**Auger Bit - Double  
Impeller - 250mm**

*Model: KMD25008  
Length: 1000mm, Diameter: 250mm*

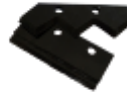
**\$125.00**



**Auger Bit - Double Impeller - 300mm**

Model: KMD30008  
Length: 1000mm, Diameter: 300mm

**\$159.00**



**Auger Blade Set - 200mm**

Model: KMDB200  
Distance Between Mounting Holes: 30mm  
Size: Blade Set 200mm  
For: KMD20008 Auger Bit

**\$22.00**



**Auger Blade Set - 100mm**

Model: KMDB100  
Distance Between Mounting Holes: 17mm  
Size: Blade Set 100mm

For: KMD10008 Auger Bit

**\$15.00**



**Auger Blade Set - 250mm**

Model: KMDB250  
Distance Between Mounting Holes: 60mm  
Size: Blade Set 250mm  
For: KMD25008 Auger Bit

**\$24.00**



**Auger Blade Set - 150mm**

Model: KMDB150  
Distance Between Mounting Holes: 30mm  
Size: Blade Set 150mm

For: KMD15008 Auger Bit

**\$18.00**



**Auger Blade Set - 300mm**

Model: KMDB300  
Distance Between Mounting Holes: 60mm  
Size: Blade Set 300mm  
For: KMD30008 Auger Bit

**\$28.00**



### **Blower - Backpack - 4 Stroke - 75.6cc**

Model: KM0410801  
Displacement: 75.6cc, 4 Stroke  
Power: 3.2kW / 7000rpm  
Air Speed: >85m/s  
Air Volume: 0.35m<sup>3</sup>/s  
Weight NW: 12kg

**\$679.00**



### **Blower - Backpack - 4 Stroke - 54cc**

Model: KM0410757  
Displacement: 54cc, 4 Stroke  
Power: 1.7kW  
Air Speed: 20m/s  
Weight NW: 11kg

**\$469.00**



### **Blower & Vacuum - 25cc**

Model: KM0410003  
Displacement: 25.4cc  
Power: 0.75kW  
Air Velocity: 60m/s  
Air Volume: 0.13m<sup>3</sup>/s  
Weight NW: 7kg

**\$259.00**



### **Blower - Professional Backpack**

Model: KM0410630  
Displacement: 63.3cc  
Power: 2.7kW, 3.8HP  
Air Volume: 0.3m<sup>3</sup>/s  
Weight NW: 11kg

**\$395.00**





**Sprayer - Backpack - 16L**

Model: KM0425160  
Spray Tank Capacity: 16L  
Spraying Pressure: 0.2-0.4MPa  
Weight NW: 3.4kg

**\$43.95**



**Spray Wand - Single Nozzle**

Model: KM04075P-05  
Type: Spray Handle, Single Nozzle, Adjustable Flow  
Connector Thread: M14x1.5

**\$25.00**



**Sprayer - Backpack, 12V - 18L**

Model: KM040718DE  
Spray Tank Capacity: 18L  
Spraying Pressure: 0.15-0.50MPa  
Weight NW: 6.5kg

**\$109.00**



**Spray Mask**

Model: KM1505102  
Type: Can be protected from Organic steam, ether, benzene, carbon disulfide.  
Use for chemical industry, fire fighting, spray painting, emergency etc

**\$29.95**



**Spray Wand - Telescopic Single Nozzle**

Model: 100-26  
Type: Adjustable Single Nozzle Telescopic Lance  
Lockable Trigger  
Connector Thread: M14x1.5

**\$35.00**



**Spray Mask—Filter**

Model: KMC102  
Type: KM1505102 Replacement Filter (EACH)

**\$8.95**



## Sprayer - Backpack - 26L

Model: KM0407420  
 Engine: 1E40FP-3Z  
 Displacement: 41.5cc  
 Power: 2.13kW, 2.8HP  
 Spray Tank Capacity: 26L  
 Discharge Range: >12m  
 Mister/Duster  
 Weight NW: 11kg

**\$289.00**



## Hedge Trimmer - Professional - 600mm

**\$369.00**

Model: KM0409028  
 Displacement: 25.4cc  
 Power: 750W, 1.1HP  
 RPM: 7500  
 Type: Double Edge Reciprocating  
 Blade Type  
 Type: Professional

Blade Length: 600mm  
 Teeth Distance: 28mm  
 Adjustable Handle Grip: 180 degrees  
 Weight NW: 7kg



## Sprayer - Backpack - 25L

Model: KM0407768  
 Engine: 1E34F  
 Displacement: 25.4cc  
 Power: 0.75kW,  
 Spray Tank Capacity: 25L  
 Spraying Pressure: 0-2.5MPa  
 Weight NW: 11kg

**\$229.00**



## Hedge Trimmer - 600mm

**\$269.00**

Model: KM0409223  
 Displacement: 25.4cc  
 Power: 750W, 1.1HP  
 RPM: 7500  
 Type: Double Edge Reciprocating  
 Blade Type

Blade Length: 600mm  
 Teeth Distance: 28mm  
 Adjustable Handle Grip: 180 degrees  
 Weight NW: 7kg



## Sprayer - Professional Backpack - 30L

Model: KM0407264  
 Engine: 1E34F  
 Displacement: 25.4cc  
 Power: 0.75kW  
 Spray Tank Capacity: 30L  
 Spraying Pressure: 0-2.5MPa  
 Weight NW: 8.5kg

**\$259.00**



## Hedge Trimmer - 650mm

**\$289.00**

Model: KM0409223A  
 Displacement: 25.4cc  
 Power: 750W, 1.1HP  
 RPM: 7500  
 Type: Double Edge Reciprocating  
 Blade Type

Blade Length: 650mm  
 Teeth Distance: 28mm  
 Adjustable Handle Grip: 180 degrees  
 Weight NW: 5.7kg



**Hedge Trimmer -  
750mm**

**\$285.00**

Model: KM0409230  
Displacement: 22.5cc  
Power: 650W  
RPM: 7500  
Type: Single Edge Reciprocating  
Blade Type

Blade Length: 750mm  
Teeth Distance: 35mm  
Weight NW: 8.0Kg



**Hedge Trimmer - Back-  
pack - 750mm**

**\$399.00**

Model: KM0409431  
Engine: KM1E40F-5  
Displacement: 42.7cc  
Power: 1.25kw, 1.8HP  
Blade Length: 750mm  
Weight NW: 11kg



**\$3,395.00**

**Trencher - 600mm - 15HP**

Model: DR-TR15  
Engine: Loncin 15HP, 4 Stroke  
Length: 2100mm  
Width: 720mm  
Height: 1100mm  
Trench Width: 100mm  
Trench Depth: 200, 400, 600mm  
Blades: 27 Carbide Alloy Blades  
Chain Length: 2000mm  
Chain Speed: 550m/min  
Trenching Speed: up to 60 running meters per hour  
Use: Compact Soils and Stones up to 50mm  
Operation: One Man  
Tires: 145/7.0-6  
Weight: 185Kg



## Tiller, (4 Stroke, Petrol) 6.5 HP

Model: KM0411108  
 Engine type KMG210  
 Displacement 196cc  
 Rated Output Power  
 4.5kw/6.5HP/3600RPM  
 Fuel 90# unleaded gasoline  
 Fuel tank volume 3.6L  
 Lubrication oil volume 0.6L  
 Starting system Recoil  
 Shift -1,0,1  
 Tilling Width 50CM  
 Tilling Depth 17.5-35CM  
 Weight NW: 92.5/80kgs

**\$1,225.00**



## Cleaning Apron

Model: KM1508502  
 Height: 129cm, leg 65cm  
 Includes: 1 pocket, neck strap,  
 attaches around each leg  
 Colour: Blue

**\$14.95**



## Leaf Vacuum / Chipper - 50mm (2")

Model: DR-LV-7  
 Engine: Ducar  
 Power: 6.5HP  
 Starting: Pull  
 Fuel Type: Petrol 4 Stroke  
 Fuel Tank: 3.6L  
 Oil Tank: 0.6L  
 Chipping: 50mm branch max  
 Wheels: Pneumatic  
 Propulsion: Self-propelled  
 Blade: 6 blade steel fan  
 Bag System: Simple to handle 4-latch,  
 collapsible hose system  
 Weight NW: 140 kg

**\$2,350.00**



## Laser Level

Model: KM131120003  
 Lines: 5 Line  
 Mode: Automatic Leveling  
 Laser Wavelength: 635nm  
 Laser Class: Class 11  
 Accuracy: +/-1mm/5m  
 Scope of Self-Correction: +/-3 degree  
 of range of light shining  
 Horizontal Angle: 120 degree  
 Vertical Angle: 150 degree  
 Vertical Point of Accuracy: 3m de-  
 partment +/-1mm  
 Width: department for 2mm 5m  
 Range: 15m in normal light condi-  
 tions  
 Power: 4.5V (3xAA Alkaline Battery)  
 Operating Time: 13h  
 Tripod Size: 1150mm fully extended  
 Weight NW: 1kg

**\$299.00**



## Heavy Duty Work Bench

Model: KM0215007  
 Type: Sliding Draw  
 Max Holding Weight: 120Kg  
 Table Top Size: 115.5(L) x 60(W)cm  
 Size: 116(L) x 60(W) x 150(H)cm  
 Weight NW: 26kg

**\$139.00**



**Repair Kit -  
Chainsaw**

Model: ES0403RT  
Type: Multi Chainsaw Repair Kit

**\$22.95**



**Clutch Disassembly Kit  
- CT-1**

Model: ES0403CT-1  
For: KM0403250/260

**\$49.95**



**Repair Kit - Chainsaw**

Model: KM0215032  
Type: 10 Piece Set

**\$29.95**



**Clutch Disassembly Kit  
- CT**

Model: ES0403CT  
For: KM0403450/260/520  
/530/580

**\$24.95**



**Repair Kit -Brush  
Cutter and Hedge  
Trimmer**

Model: KM0215031  
Type: 12 Piece Set

**\$32.95**



**Parts Washer -19L**

Model: KM0121001  
Type: Bench  
Capacity: 19 Litre (5 Gallon)  
Weight NW: 6.5kg

**\$115.00**



## Parts Washer -76L

Model: KM0121002  
Type: Floor  
Capacity: 76 Litre (20 Gallon)  
Weight NW: 23kg

**\$249.00**



## Piston Ring Pliers

Model: KM0403P-1D  
Function: Piston Ring Pliers  
Size: 40mm maximum diameter

**\$9.95**



## Bearing Puller

Model: KMBT-1  
Function: Bearing Puller  
Fit For: Inner Hole 12mm to 38mm  
(1/2" to 1.5")

**\$55.95**



## Carburettor Pressure Tester

Model: KMCT-02  
Function: Carburettor Pressure Tester  
Uses: Test engine pressure

**\$119.00**



## Air / Oil / Siphon - Hand Pump

Model: KMOP-06  
Function: Multi Pump  
Uses: Air Pump, Siphon Pump, Oil Extractor

**\$19.95**



## Filter Hook

Model: FH-01  
Function: Fuel Tank Filter Hook  
Size: 110mm metal hook length

**\$4.95**

**Grease Gun - Mini Compact**

Model: ES0403GG-1  
Type: Hand Operated



**\$24.95**

**Circlip Set - Internal Opening - 300 Pcs**

Model: 05-HCK-1



**\$38.95**

**Bearing Puller Set**

Model: KMBT-2  
Function: Bearing Puller  
Fit For:  
Small Internal Puller: 15mm to 30mm (5/8" to 1 3/16")  
Large Internal Puller: 30mm to 80mm (5/8" to 3 5/32")  
External Puller: 15mm to 80mm (5/8" to 3 5/32")



**\$119.00**

**Circlip Set - External Opening - 300 Pcs**

Model: 05-ONK-1



**\$42.00**

**Cotter Split Pin Set - 25 Pcs**

Model: 05-PQK-1



**\$14.95**

**Grease Nipple Set - 60 Pcs**

Model: 05-ONK-1



**\$39.95**

**Shaft Key Set - Straight & Woodruff - 120 Pcs**

Model: 05-KK-1



**\$45.00**

**Chainsaw Stud, Nut Set - 67 Pcs**

Model: 37.4K-01



**\$29.95**









## CONTACT US

**Phone:**

(03) 313 1415

**Email:**

[Sales@GoodsDirect2U.co.nz](mailto:Sales@GoodsDirect2U.co.nz)

**Web:**

[www.GoodsDirect2U.co.nz](http://www.GoodsDirect2U.co.nz)

**Address:**

589 Mount Thomas Road, RD1,  
Fernside, New Zealand 7471

**Opening Hours:**

9am - 5pm Monday-Friday

10am - 12noon Saturday